

City of Ottawa

# Tree Planting Programs



**“Let’s Talk About Trees”**

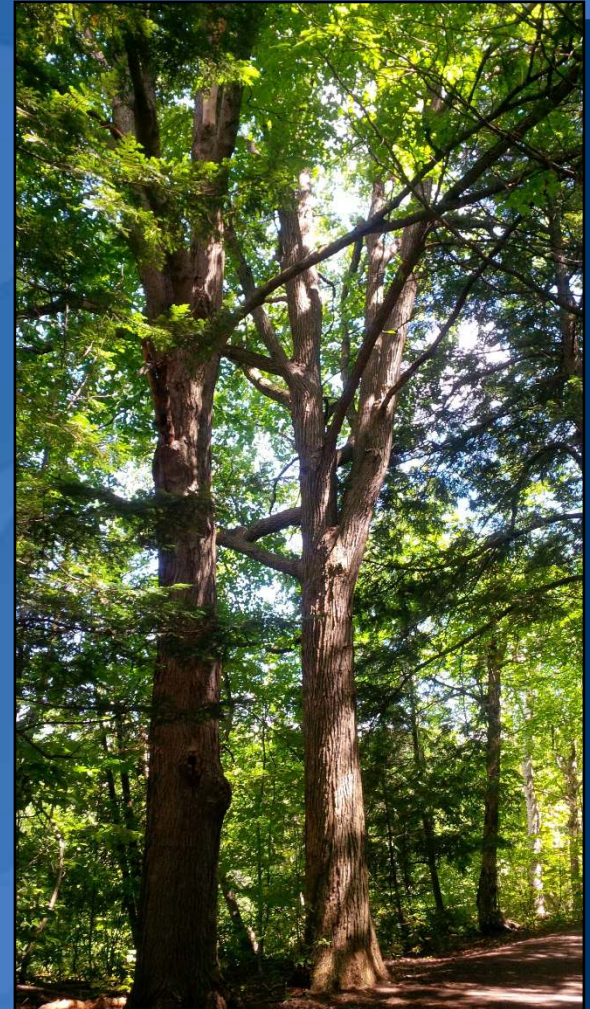
April 10, 2019

Tracey Schwets  
Program Manager, Forest Management Branch  
Park, Forestry, and Stormwater Services



# Overview

- Trees planting in Ottawa
- Urban Forest Management Plan
- Tree planting programs
- Planting timelines and operations
- Tree by-Laws



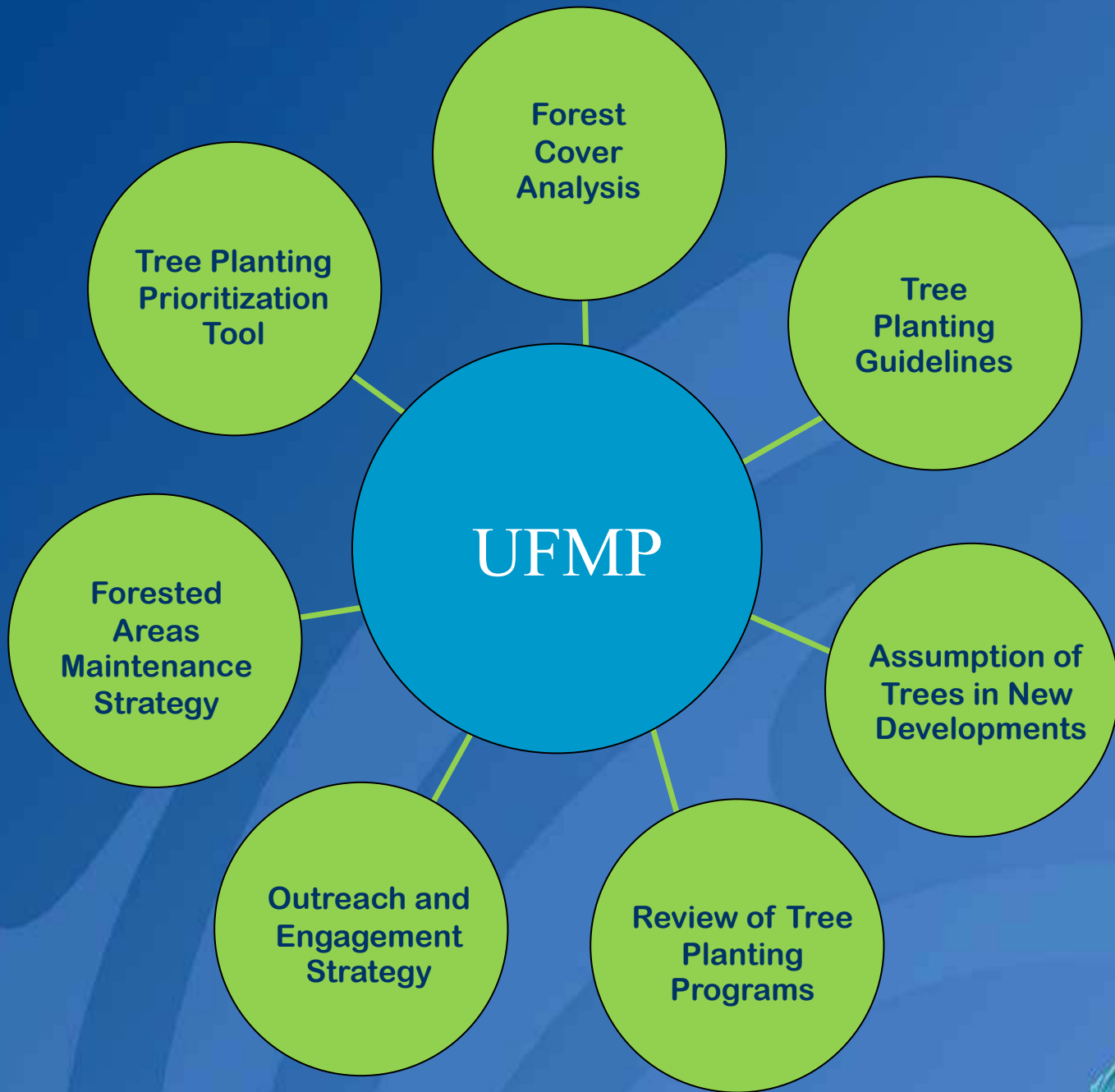




# Urban Forest Management Plan

- 20 year Strategic Plan
- Five 4-year management periods
- 26 Recommendations
- Criteria and Indicators to measure progress







# Forestry Field Operations Branch

# Forest Management Branch

Parks,  
Forestry, and  
Stormwater  
Services



# Tree Planting Programs

- Trees in Trust Program
- Commemorative Tree Program
- School Yard Tree Planting Grant Program
- Streetscape and Park Tree Planting
- Ash Replacements
- Community Tree Plantings
- Green Acres Program

# Trees in Trust

- Tree planting on the City-owned portion of the road allowance in front of a residence
- City plants- Resident waters
- No charge to the homeowner
- Variety of tree species available





# Commemorative Tree Program

- Tree planting in memory of an individual
- City plants the tree in a City Park
- Cost recovery
- Plaque additional cost



# Schoolyard Tree Planting Grant Program

- Up to \$10,000 per project for tree planting
- Funding Available in Trees or Dollars
- No matching funds required

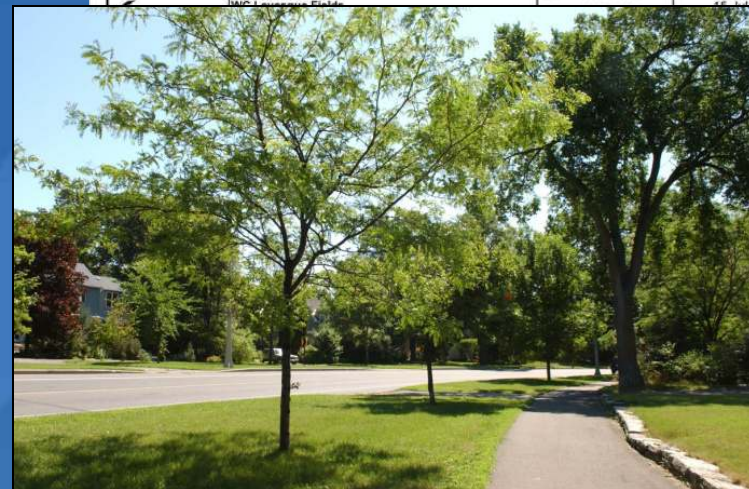
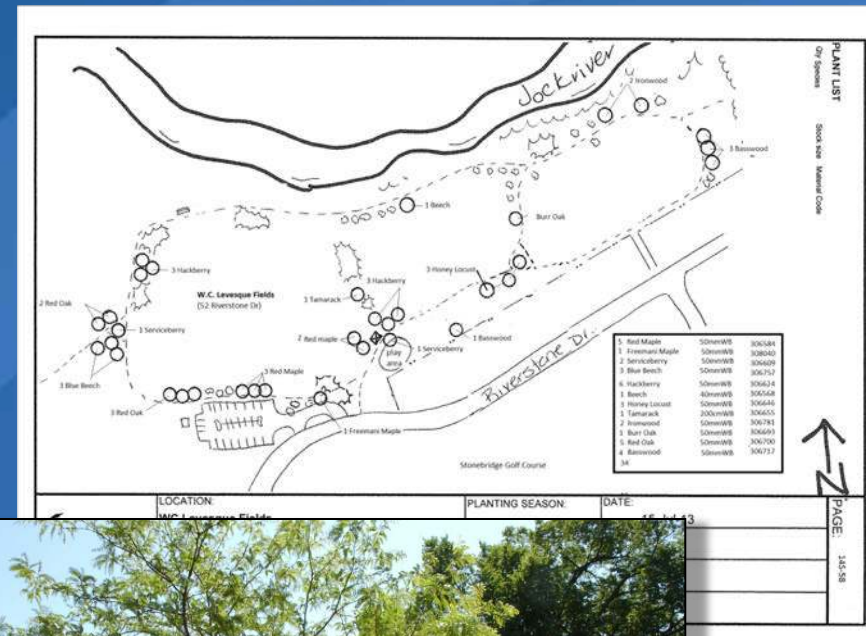
## Application Deadline:

- June 1st for spring projects the following year



# Streetscape and Park Tree Planting

- Replacement and new tree planting along streets, in parks and at City facilities
- Work with Community Groups on appropriate location for new trees in their community



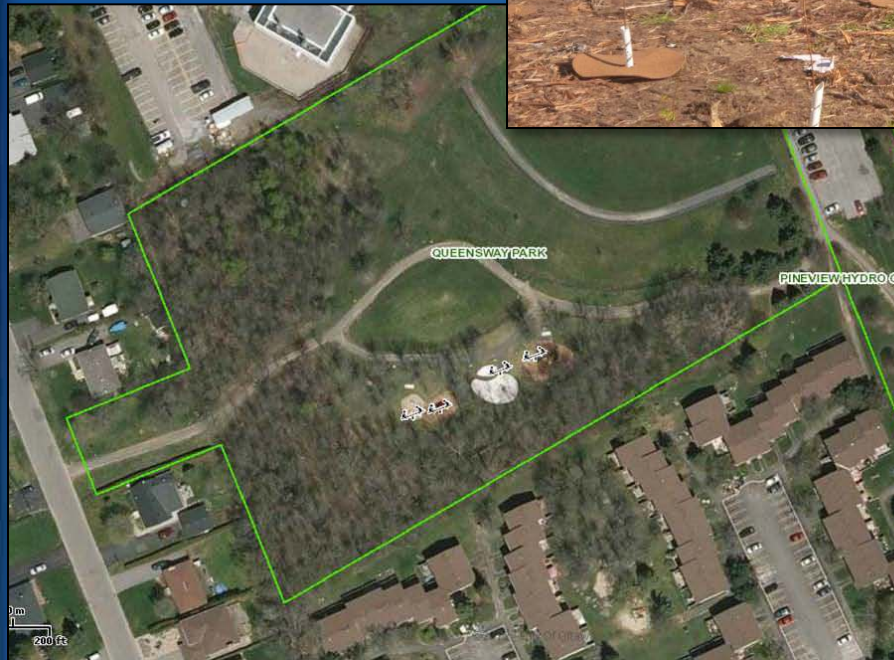


# Ash Tree Replacements



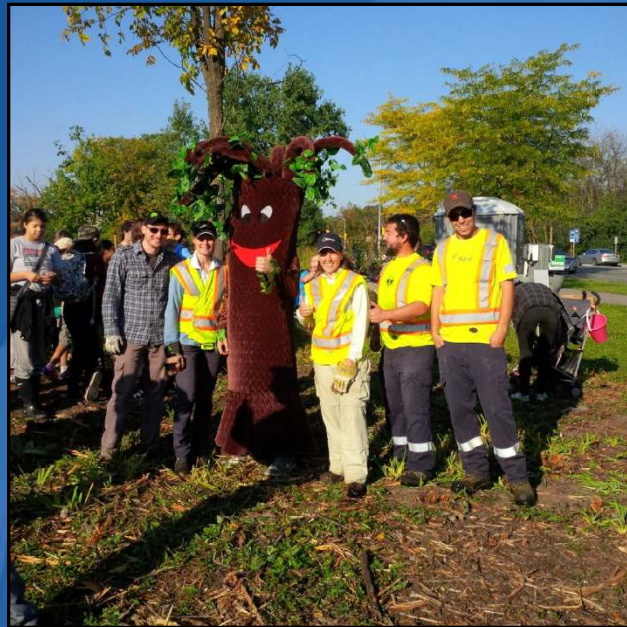


# EAB Reforestation Projects





# Community Tree Planting





# Green Acres Rural Reforestation Program

- Reforestation in partnership with private land owners
- Cost sharing
- Administered through the Conservation Authorities



# Tree Planting Timelines

## Planting Seasons

- May-June
- October- November



## Prior to Planting

- Site Visits
- Plans
- Circulate Planting Locations
- Routing
- Tree Orders and Deliveries
- Utility Locates



# Tree Planting Operations





# Tree Planting Operations



# Tree Watering

- First Three Years after Planting
- May- September
- Over 10,000 trees
- Hose Trucks
- Mechanical Arm Trucks





# Establishment Tree Pruning



Before

- Structural pruning of young trees



After

- Mulch
- Stake removal
- Tree protection



# Municipal Trees and Natural Areas Protection By-law

- Regulates injury or destruction of city-owned trees and natural areas
- Applies city wide



# Urban Tree Conservation By-Law

- Regulates tree removal on private property
- Applies within the urban boundary





**For more information...**



[www.ottawa.ca/forestry](http://www.ottawa.ca/forestry)

or Call 3-1-1