

Recreation, Culture and Facilities Services (RCFS)-Parks Planning

The park planning process, RCFS mandate and trees

Subdivision Services, Grade Raises and Tree Retention

- The provision of services for a subdivision (water, sewer, road base etc.) usually requires changes in grades.
- Retained trees may end up at the bottom or top of a slope, which causes change to the existing site conditions and that can result in tree mortality.
- Retained trees are isolated and subject to wind damage that can result in hazard trees that require removal.
- Other park amenities may be sacrificed to retain trees and the existing grades.



Albert Argue Black Park,
ward 6

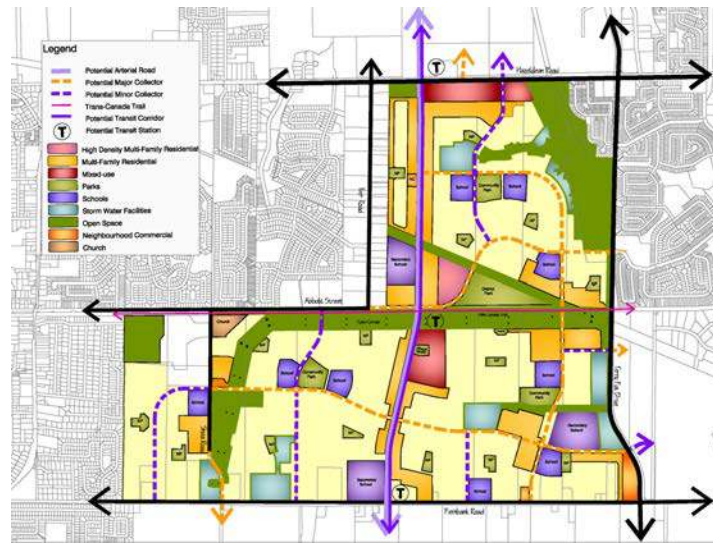
Maplewood Park,
ward 23

Recreation, Cultural and Facility Services (RCFS) Department and Parks Planning

- The park system supports the greenspace network and promotes active recreation. The Official Plan directs that “good parks and leisure areas are well-distributed within communities, easily accessible from homes and linked to the greenspace network”.
- Official Plan identifies a target of 2.0 hectares per 1000 population, or approximately 8-10% of developable land area. Parkland dedication in accordance with the *Planning Area* requirements of 1 hectare per 300 residential dwelling units, plus 2% of the land area for non-residential uses.
- The City of Ottawa Official Plan set a target of 30% tree canopy cover for the entire city. Parks play an important role in achieving this target but it is only one of many objectives for park development.
- Recreation, Culture and Facility Services has a diverse mandate and objectives:
 - to provide access to high quality recreation and cultural services;
 - to encourage healthy and active lifestyles; and
 - to contribute to Ottawa’s cultural identity and heritage.

Park Development

- The success of new parks begins when park blocks are selected and acquired. Parks are strategically acquired and located based to satisfy recreational needs and to take advantage of existing natural features where possible.



Example: Fernbank CDP- Land Use Plan



Example: Fernbank CDP- Greenspace Plan

Park Types and Amenity Requirements

- **District Parks:** large destination park with large service radius with a mix of passive and active recreational activities.
- **Community Parks:** service a community or group of neighbourhoods with a mix of passive and active recreational activities, 3-5ha in size
- **Neighbourhood Parks:** provide active and passive recreation within a 10 minute walking radius, 1-3ha in size
- **Parkette:** small local gathering space, for children to play and largely passive recreation
- **Woodland Park:** woodland preserved and integrated into park network
- **Urban Parkette/Plaza:** small, intensely used, multifunctional

Park Amenities	Require Flat Open Space	Park Suitability
Artificial turf field multi-use	Yes	District Parks
Full Soccer	Yes	Community Parks
Intermediate Soccer	Yes	Community, Neighbourhood Parks
Mini-Soccer (2 per full/int size field)	Yes	All Parks
Football	Yes	District Parks
Ultimate Field	Yes	Community, Neighbourhood Parks
Full Basketball	Yes	Community, Neighbourhood Parks
Half Basketball / Basketball Key	Yes	Neighbourhood, Parkette Parks
Softball or Baseball	Yes	District, Community Parks
Tennis Courts	Yes	District, Community Parks
Skateboard Facility	Yes	District, Community Parks
BMX Facility	Open not flat	District Parks
Permanent Boarded Rink/Multi-Use Court	Yes	District, Community Parks
Temp boarded puddle rink	Yes	Community, Neighbourhood Parks
Puddle Rink	Yes	Community, Neighbourhood Parks
Fitness Equipment		District, Community Parks
Looped pathway/seating areas		All Parks
Wading Pool	Yes	Community Parks
Splash Pad	Yes	District, Community,
Sliding Hill	Open not flat	District, Community Parks
Play structures and Swings	Yes	All Parks
Shade Structure	Yes	District, Community, Neighbourhood Parks
Seating areas / Quiet moment spaces		All Parks
Open space / free play zones		All Parks
Naturalized area		All Parks
Parking - asphalt	Yes	District, Community Parks
Community Building	Yes	District, Community Parks
Arena/Pool complex	Yes	District Parks

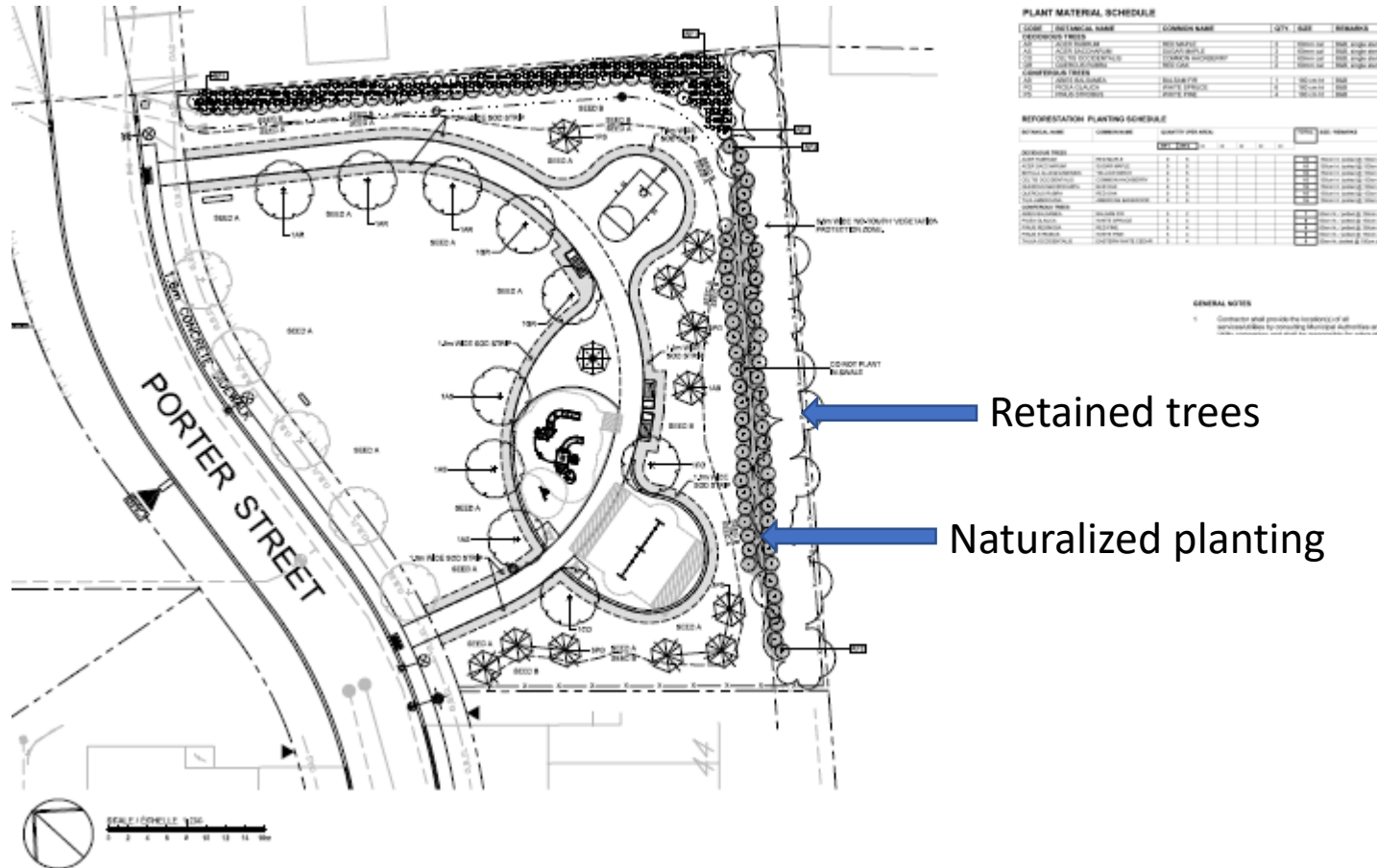
Planning Park Distribution

- Community Parks- within a 10 minute walking distance example Fernbank CDP

Neighbourhood Parks- within a 5 minute walking distance example Fernbank CDP



Planted naturalized areas-examples

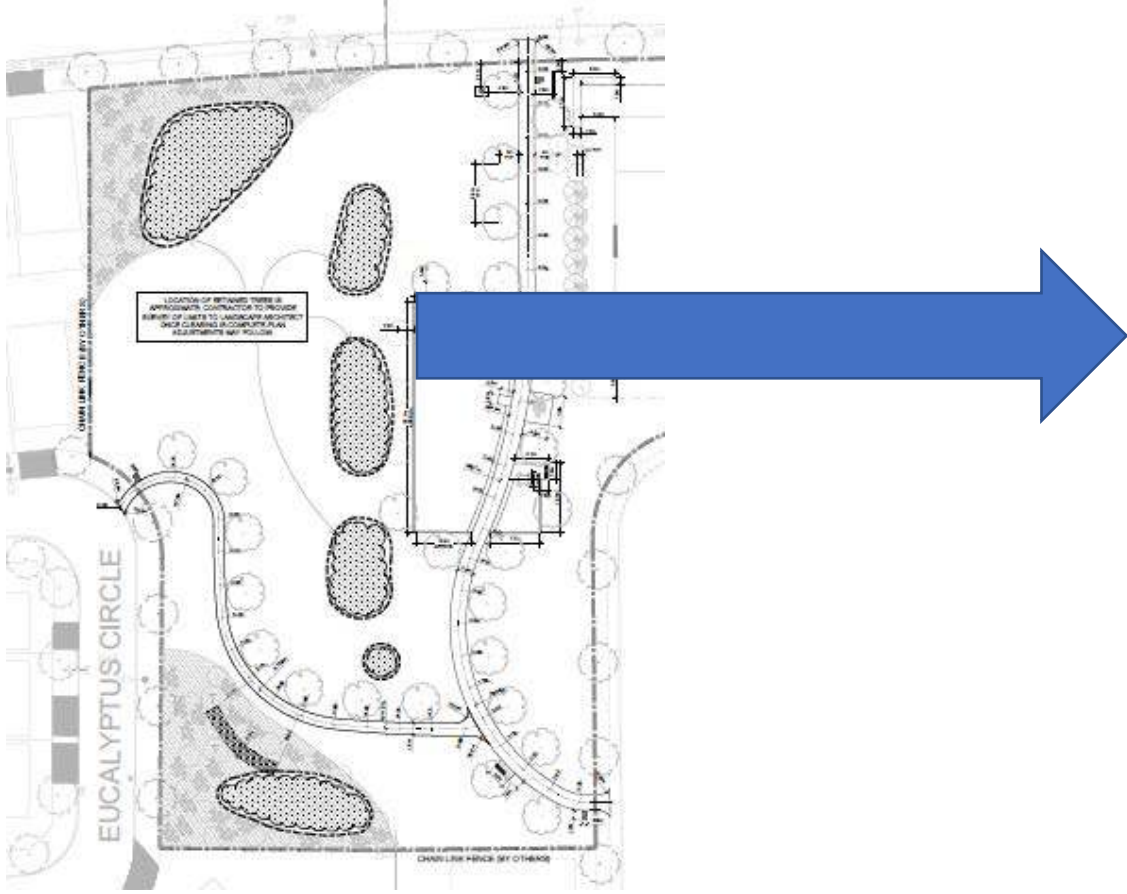


Naturalization planting: Biosdale Park, ward 19



Proposed naturalized planting and retained young tree buffer- William Bradley Park, ward 6

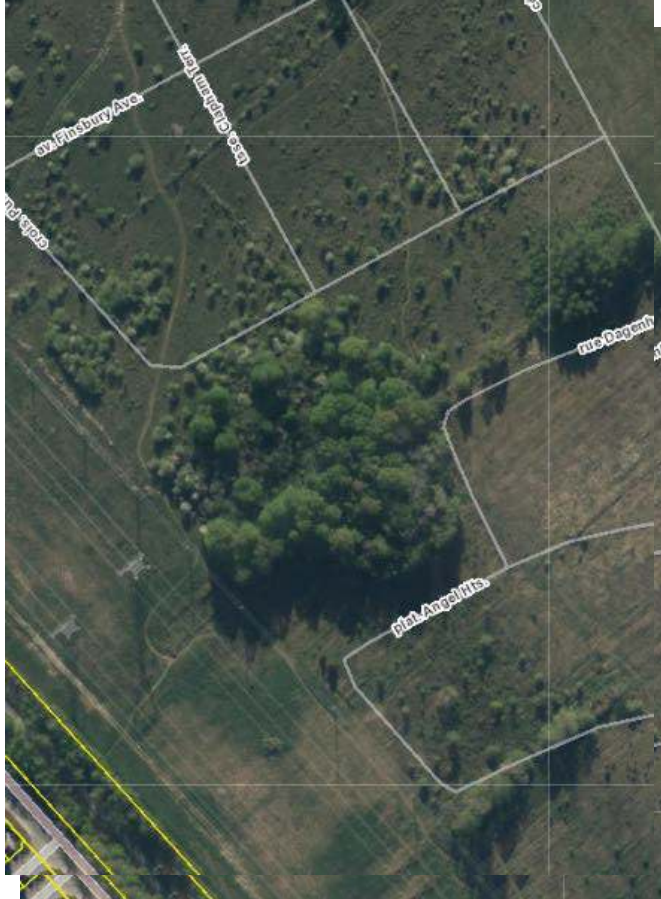
Tree Retention in Parks- example of park with pockets of retained trees



Albert Argue Black Park: ward 6



Woodland Parks-examples



PROPOSED TREE LIST / LISTE D'ARBRES PROPOSÉS	
LATIN NAME / NOM LATIN	COMMON NAME / NOM COMMUN
RECOMMENDED SPECIES	
Alder / Frêne	Frêne commun (Fraxinus excelsior)
Maple / Érable	Érable commun (Acer sycamore)
Oak / Chêne	Chêne commun (Quercus robur)
Willow / Saule	Saule commun (Salix caprea)
CONSERVED / CONSERVÉS	
White Birch / Épicéa	Épicéa commun (Picea canadensis)
Red Pine / Pin	Pin commun (Pinus sylvestris)
Blue Spruce / Sapin	Sapin commun (Abies balsamea)

REFORESTATION SPECIES / ESPÈCES POUR REBOISEMENT	
LATIN NAME / NOM LATIN	COMMON NAME / NOM COMMUN
RECOMMENDED SPECIES	
Aspen / Hêtre	Hêtre commun (Fagus sylvatica)
Oak / Chêne	Chêne commun (Quercus robur)
Maple / Érable	Érable commun (Acer sycamore)
CONSERVED SPECIES	
White Birch / Épicéa	Épicéa commun (Picea canadensis)
Red Pine / Pin	Pin commun (Pinus sylvestris)
Blue Spruce / Sapin	Sapin commun (Abies balsamea)

SUPPORTING IMAGERY / IMAGES EXPLICATIVES

NOTE: THESE IMAGES ARE FOR CONCEPTUAL PURPOSES ONLY AND DO NOT REPRESENT THE EXACT CONDITIONS OF THE PROPOSED PARK. PHOTOGRAPHS OF SIMILAR PARKS ARE USED TO ILLUSTRATE THE CONCEPTS OF THE PROPOSED PARK.

Entry- Maplewood Park: ward 23

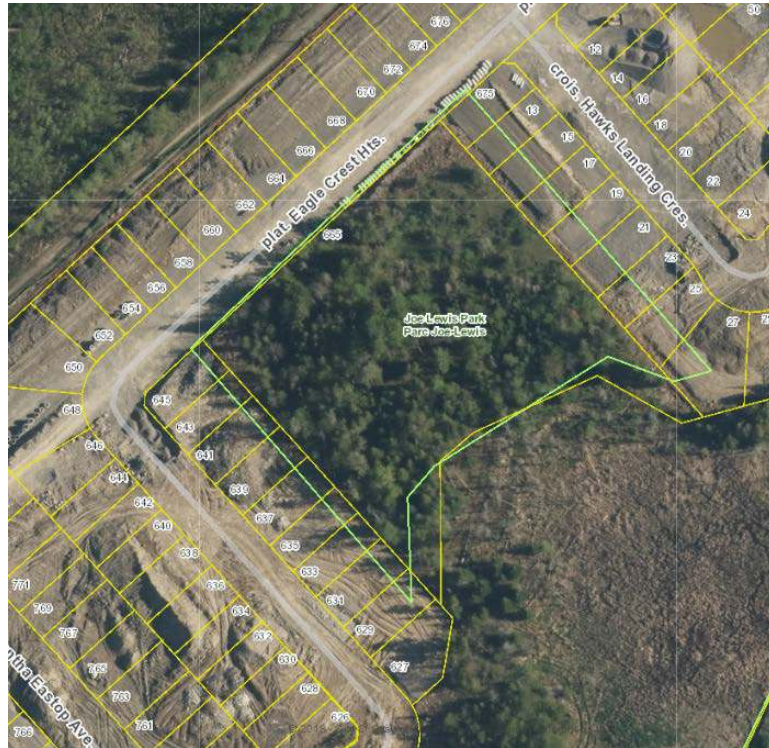


Play structure -Havencrest Woods: ward 3



Site and Concept -Putney Woodland Park: ward 6

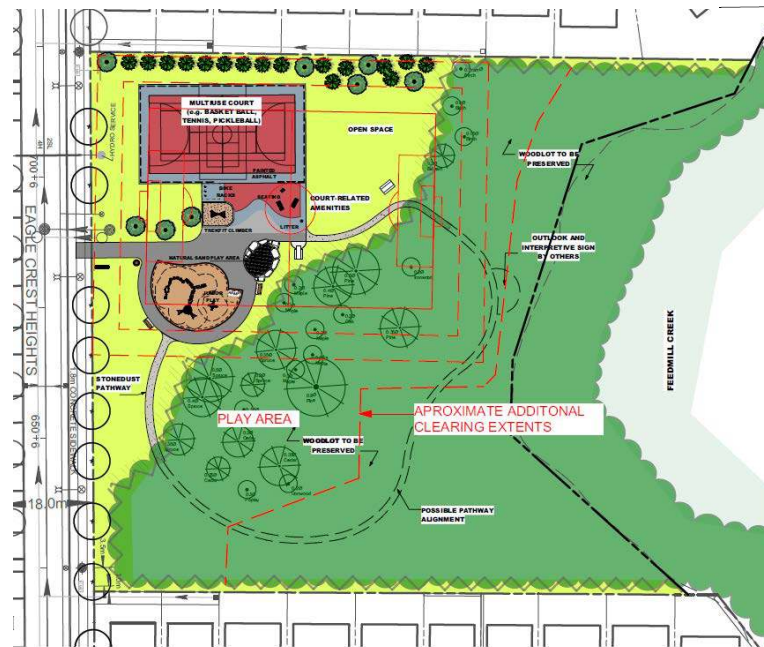
Minto Potter's Key - example



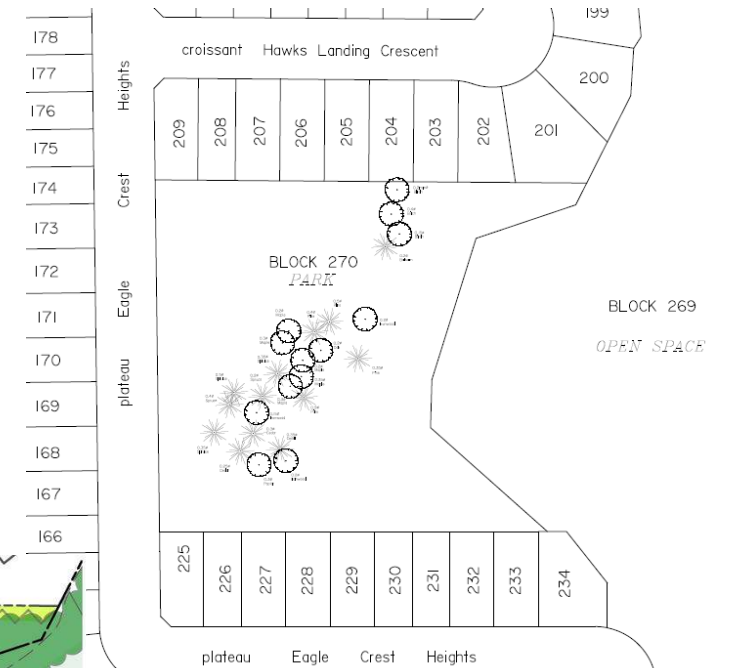
Potter's Key Subdivision – North Park:
Ward 6
(Existing Conditions)



June 2018



Concept Plan Overlay



Tree Survey Plan



February 2019

Questions: