



Early settler of Beckwith Township

"There is something in the ponderous stillness of these forests..."

In Upper Canada the endless hills of pine give way at last... gigantic beeches, tall hemlocks and ash, with maples, birch and wild sycamore...

Mile after mile, and hour after hour of such a route was passed."

Goulbourn Township

A farming community settled post American Revolution.

Land surveys of E. Ontario were completed 1783-1829.



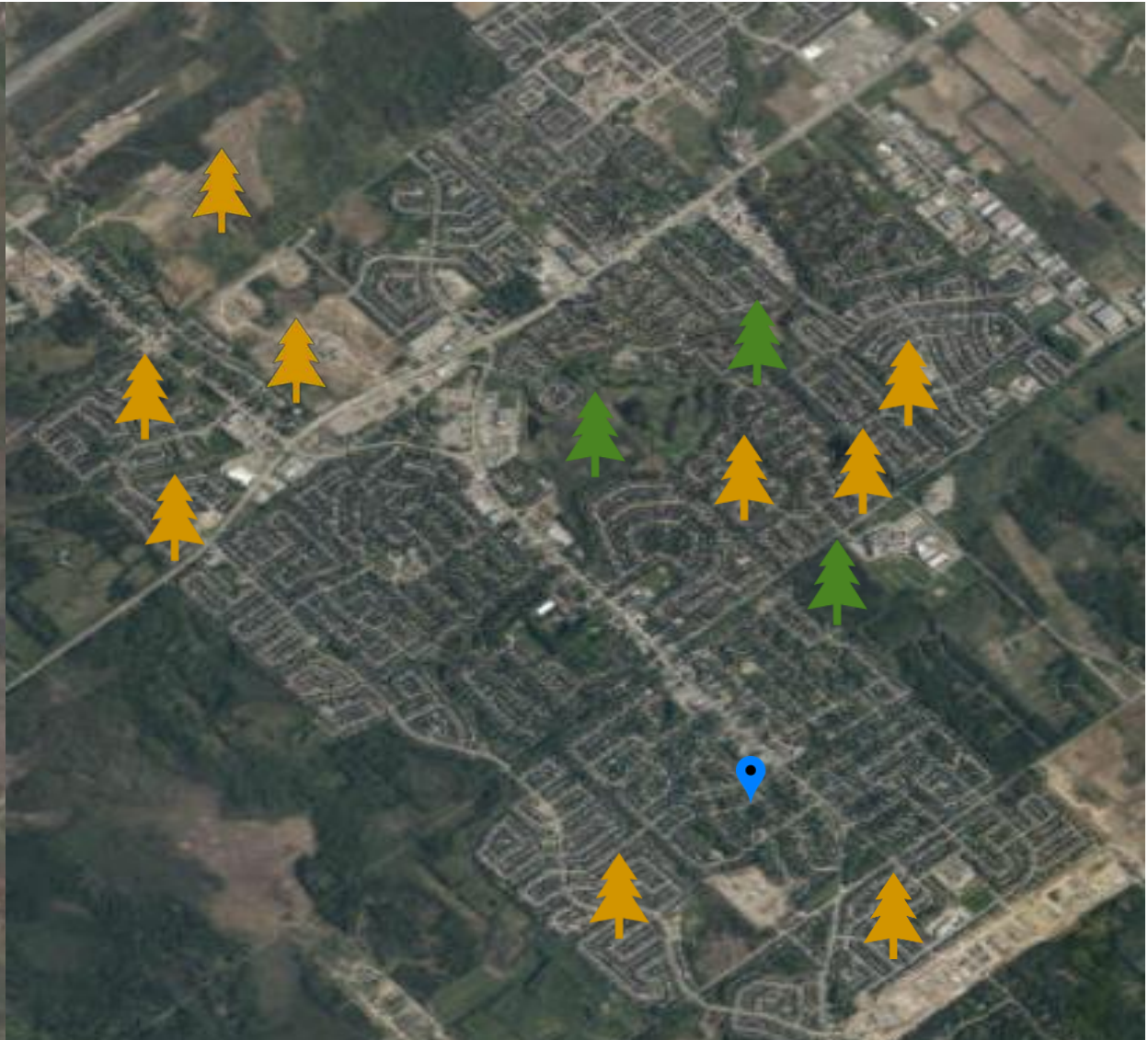
Deforestation

A portion was removed by First Nation farmers prior to European settlement.

By the 1880s, only 20-30% of Eastern Ontario forests remained.

“Settlement caused...the export of soil fertility, increases in the severity of spring floods, reduced summer stream flows and even reduction in the distribution and amount of rainfall.”





Stittsville forests
1976 to 2017

A large pile of driftwood on a forest floor. The driftwood is weathered and greyish-brown, scattered across a grassy area. In the background, there is a dense forest of tall, thin trees. A semi-transparent circular overlay is positioned on the left side of the image, containing text.

Why Sustainable Stittsville?

- Cleans our air and water
- Provides mental respite
- Is home to the wildlife we appreciate
- Acts as a sponge for rain and urban run-off
- Protects and adds value to our community, our properties, and our lives

We continue
to grow!



Change is possible

Norway Spruce Street
circa 1960



Today

Because people:

- Retained trees and shrubs
- Planted more





Goal: Most treed community!

Next steps

- Raise awareness and community engagement
- Identify partners
- Seek approvals
- Obtain grants
- Organize activities
- Celebrate success
- Identify more projects and partners!

