

# Stittsville Main Street Public Realm Plan Update

Public Information Session – April 27<sup>th</sup>, 2022



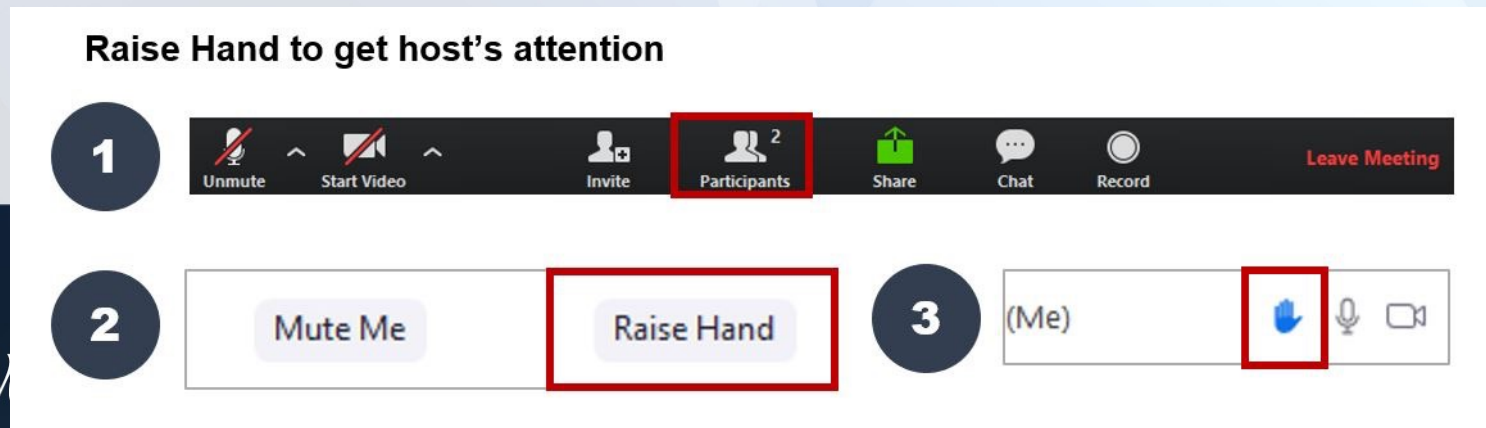
# Zoom Participation Protocol | Protocole en place pour les réunions sur Zoom

- 1) All participants are automatically on mute during presentation.
- 2) If you have a question you can submit those through the chat function.
- 3) If you have any IT questions, you can send them to the IT help option.

**Thank you for your patience!**

- 1) Tous les participants seront automatiquement placés en mode silencieux pour la présentation
- 2) Pour poser une question, utilisez l'espace de clavardage
- 3) Si vous avez une question technique, vous pouvez l'envoyer par l'intermédiaire de l'option de dépannage prévu à cet effet.

**Merci de votre patience!**



# Land Recognition

Ottawa is located on unceded territory of the Anishinabe Algonquin Nation.

The peoples of the Anishinabe Algonquin Nation have lived on this territory for millennia.

Today, Ottawa is home to approximately 40,000 First Nations, Inuit and Métis people.

Ottawa's indigenous community is diverse, representing many nations, languages and customs.

The City honours the land of the First Peoples, as well as all First Nations, Inuit and Métis in Ottawa and their valuable past and present contributions to this land.

# Reconnaissance du territoire

Ottawa est située sur un territoire non cédé de la nation Anishinabe algonquine.

Les peuples de la nation Anishinabe algonquine vivent sur ce territoire depuis des millénaires.

Aujourd'hui, Ottawa compte environ 40 000 membres des Premières Nations, Inuits et Métis.

La communauté autochtone d'Ottawa est diverse et représente de nombreuses nations, langues et coutumes.

La Ville rend hommage au territoire des premiers peuples, ainsi qu'à l'ensemble des membres des Premières Nations, des Inuits et des Métis d'Ottawa, de même qu'à leurs précieuses contributions passées et présentes à ce territoire.

# Agenda

- **Welcome and Introductions**
- **Councillor presentation**
- **Project presentations**
- **Q&A**
- **Wrap up**



# Welcome and Introductions

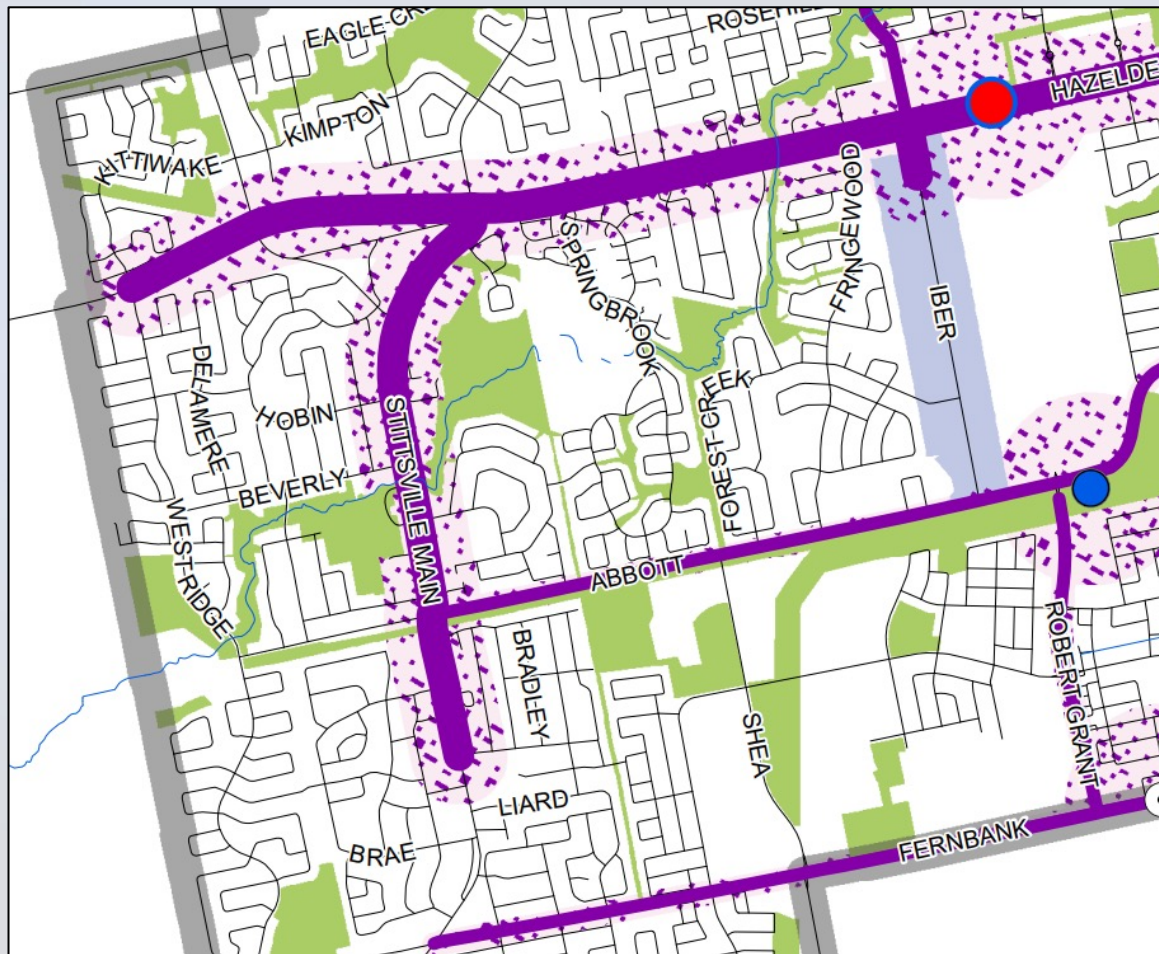
- **Councillor Glen Gower, Ward 6 – Stittsville**
- **Court Curry, Manager, Right of Way, Heritage, & Urban Design**
- **Matthew Ippersiel, Planner II, City of Ottawa**
- **Gabriella Robertson-Tremblay, Project Manager, City of Ottawa**
- **Ron Clarke, Parsons**

# Part 1: Study Overview

# Study Mandate

[Develop a] **Public Realm Plan** to guide the renewal of the right of-way along the length of the Stittsville Main Street between Hazeldean Road and Bobcat Way. The Public Realm Plan will guide the design and placement of **streetscape** and **transportation** elements as part of **capital investments** and will inform **development applications** that require and/or propose modifications within the right-of-way.

# Official Plan – Mainstreet Designation

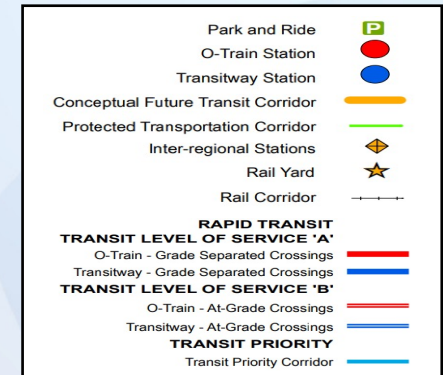
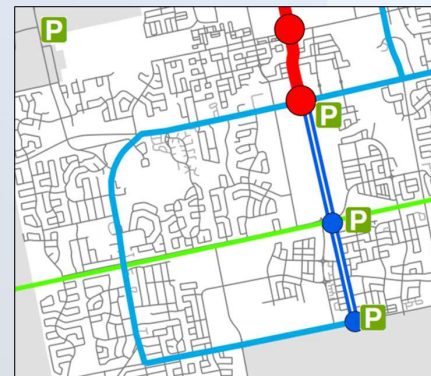
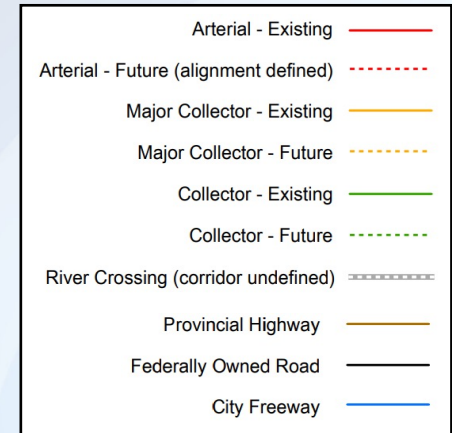
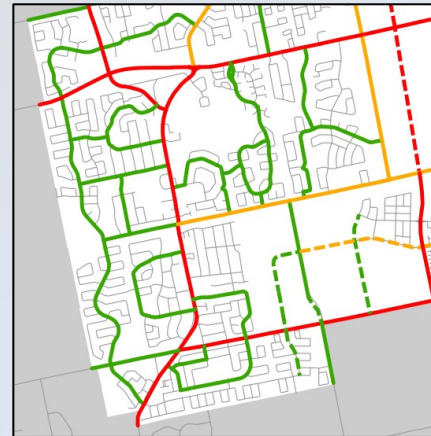


OVERLAY / AFFECTATION SUPPLÉMENTAIRE	
	Evolving Neighbourhood / Quartier en évolution
DESIGNATIONS / AFFECTATIONS	
<b>TC</b>	Town Centre / Centre ville
	Hub / Carrefour
	Corridor - Mainstreet / Couloir - Rue principale
	Corridor - Minor / Couloir - Rue principale mineure
	Mixed Industrial / Industrie Mixte
	Industrial and Logistics / Industrie et Logistique
	Greenspace / Espace vert
	Neighbourhood / Quartier
OTHER / AUTRE	
	Solid Waste Disposal Site / Site d'enfouissement des déchets solides
TRANSIT	
	O-Train Station / Station de l'O-Train
	Future O-Train Station / Station de l'O-Train (futur)
	Transfer Station / Station de correspondance
	Transitway Station / Station du Transitway
	Terminus Station / Station terminus



# The Mainstreet

- Transit Priority Route
- Cycling Spine Route
- Arterial Road
- Truck Route





# Community Working Group

- Consists of representatives from the community, businesses, staff, and the City Councillor's office
- Met on three occasions to:
  - Provide initial thoughts and suggestions (November 2021)
  - Review a preliminary draft plan (January 2022)
  - Review an updated draft plan (April 2022)
- Further opportunities for individual stakeholder input

# Study Objectives...a Plan that:

1. **Supports** the City's Official Plan, CDP and Secondary Plan vision for the corridor
2. **Leverages** the role as Stittsville's mainstreet and village core
3. **Rebalances** space in the ROW to achieve contemporary objectives
4. **Pursues** "complete street", transit priority and active transportation goals

# Study Objectives...a Plan that:

- 5. **Showcases** public realm improvements and street beautification
- 6. **Inspires** future investment and high-quality design
- 7. **Informs** subsequent street functional designs and Site-Plan Control decisions affecting the street frontage
- 8. **Harnesses** incremental and long-term delivery/funding opportunities

# General Schedule

- |                |   |   |
|----------------|---|---|
| <b>Phase 1</b> | - Project Start-Up                              | Early September   |
| <b>Phase 2</b> | - Existing Conditions and Transportation Study  | End of October  |
| <b>Phase 3</b> | - Identification and Evaluation of Alternatives | November & December<br><i>(including preparation of demonstration plan)</i> |
| <b>Phase 4</b> | - Draft Public Realm Plan                       | April - May   |

# **Part 2: Draft Public Realm Plan – Focus Areas**



# Complete Street Cross Sectional Elements

- Boulevards for street tree planting
- Wide, Accessible Sidewalks (2.0m min)
- Cycle Tracks (2.0m min)
- Bus stops with space for shelters
- One vehicle lane in each direction
- Vehicle turning lanes where essential



## Legend

-  Signalized Intersection
-  Mainstreet Approach (one or more per frontage)
-  Mainstreet Pedestrian Links
-  Proposed Pathways & MUPs
-  Existing Pathways/ Trails
-  Evaluate Potential to Consolidate Private Approach
-  Points of interest/ discussion
-  OC Transpo Bus Stops
-  Potential Greening Zone
-  Potential Lighting Display Zone
-  Potential Gateway Landscape Design
-  Proposed Street Tree Plantings
-  Existing Trees
-  Trees to be removed
-  Electrical transformers and other connection structures
-  Possible Raised Medians (Traffic Calming measure)
-  Property Lines
-  Official Plan Protection Limits

# 1. North Gateway (Kavanagh Green) - Existing





## Legend



# 1. North Gateway (Kavanagh Green) - Reimagined





---

## 1. North Gateway (Kavanagh Green) - *Imagery*



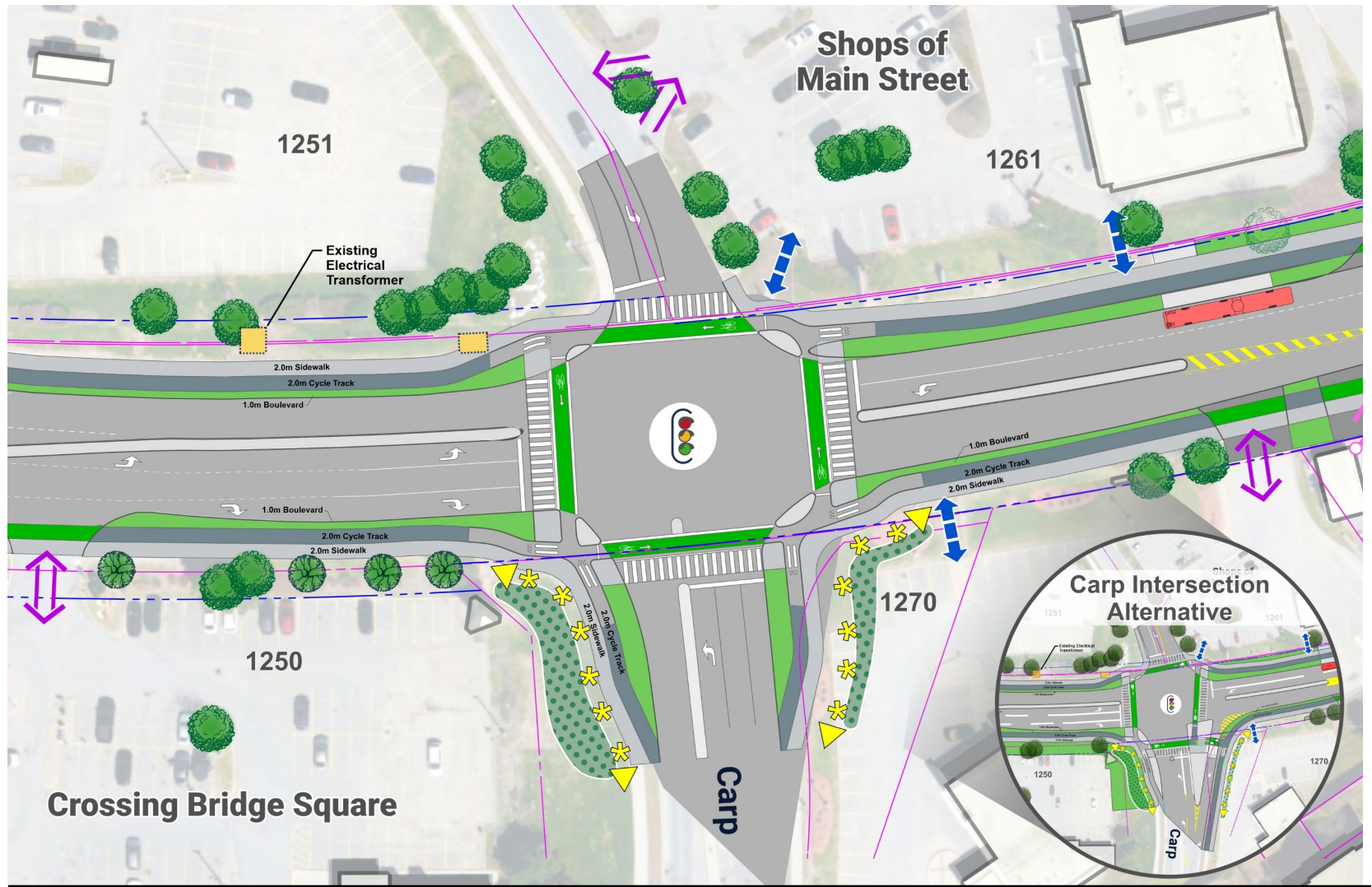


#### Legend

Signalized Intersection	Mainstreet Approach (one or more per frontage)	Mainstreet Pedestrian Links	Proposed Pathways & MUPs	Existing Pathways/ Trails	Evaluate Potential to Consolidate Private Approach	Points of interest/ discussion	OC Transpo Bus Stops	Potential Greening Zone
Potential Lighting Display Zone	Potential Gateway Landscape Design	Proposed Street Tree Plantings	Existing Trees	Trees to be removed	Electrical transformers and other connection structures	Possible Raised Medians (Traffic Calming measure)	Property Lines	Official Plan Protection Limits

## 2. Carp Road Intersection - *Existing*



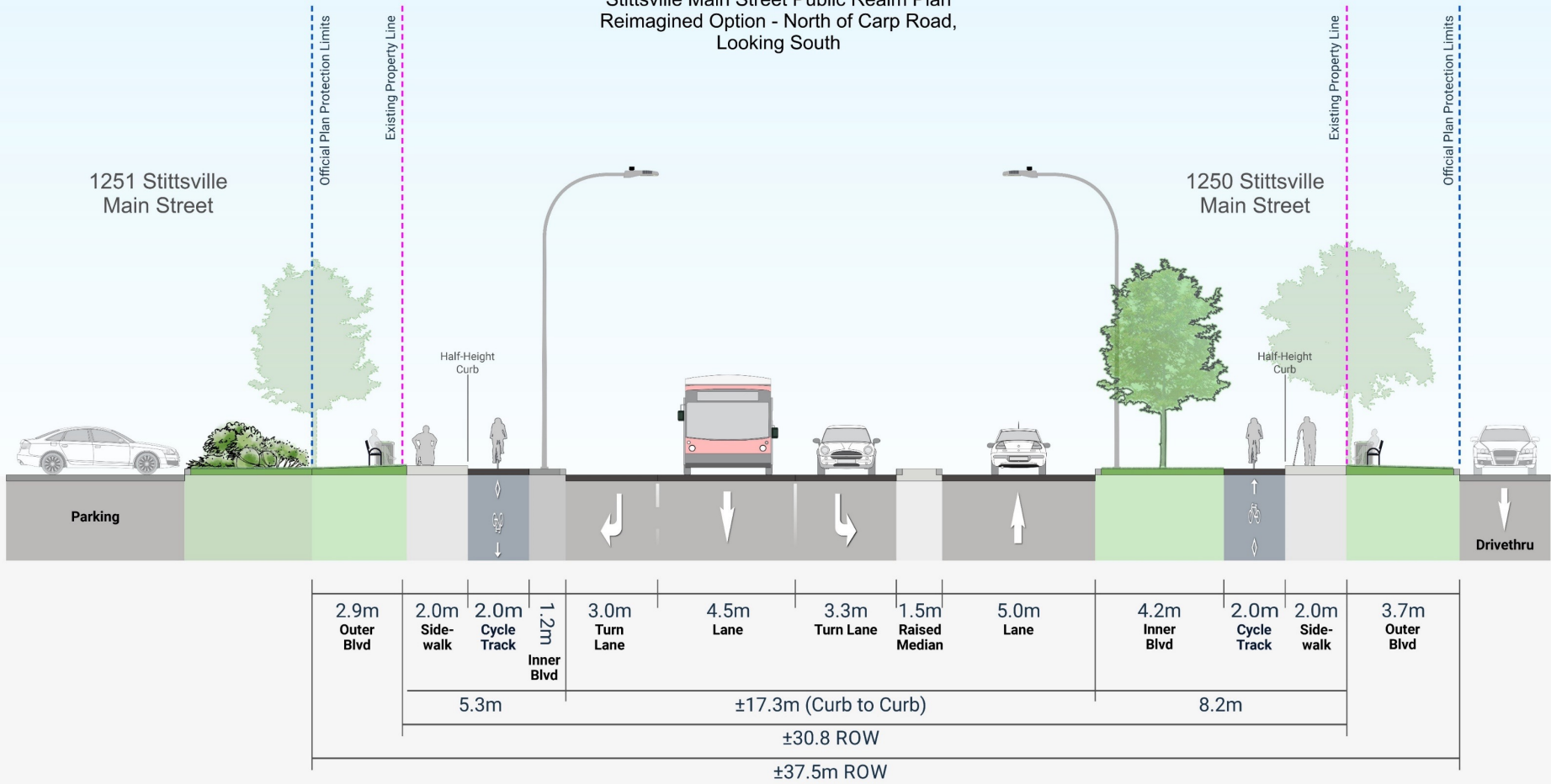


## Legend



## 2. Carp Road Intersection - *Reimagined*

Stittsville Main Street Public Realm Plan  
Reimagined Option - North of Carp Road,  
Looking South



## 2. Complete Streets Cross Section - 37.5m ROW





# Protected Intersection



Figure 5.4. Standard protected corner with 10.0 m radius showing 5.0 m crossride setback

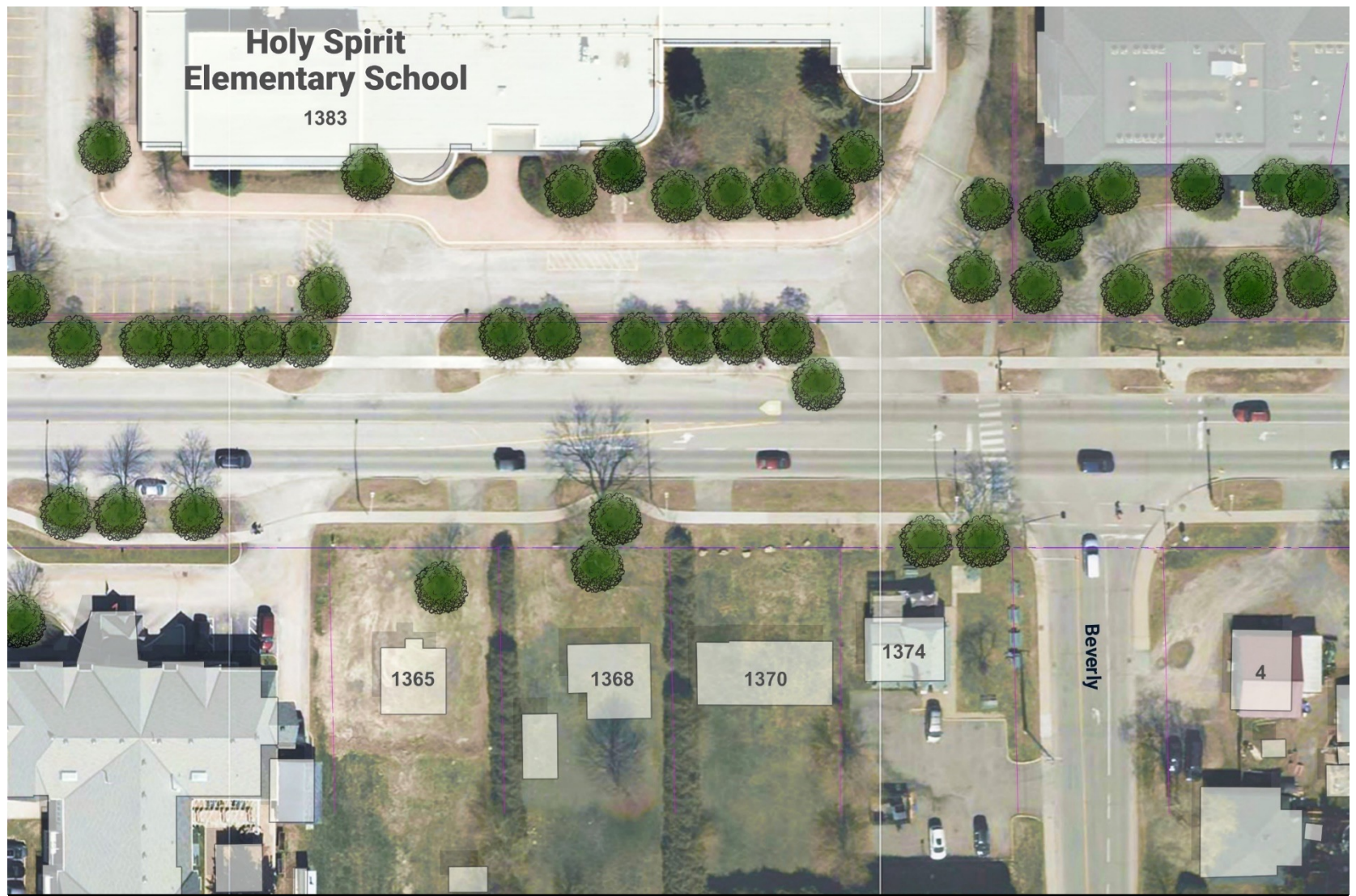
## Design Features

- A** 10.0 m curb radius
- B** 5.0 m crossride setback

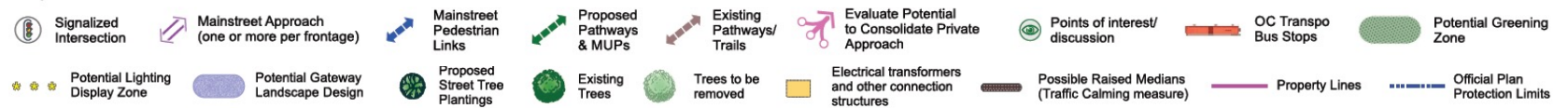


## 2. Carp Road Intersection - Imagery



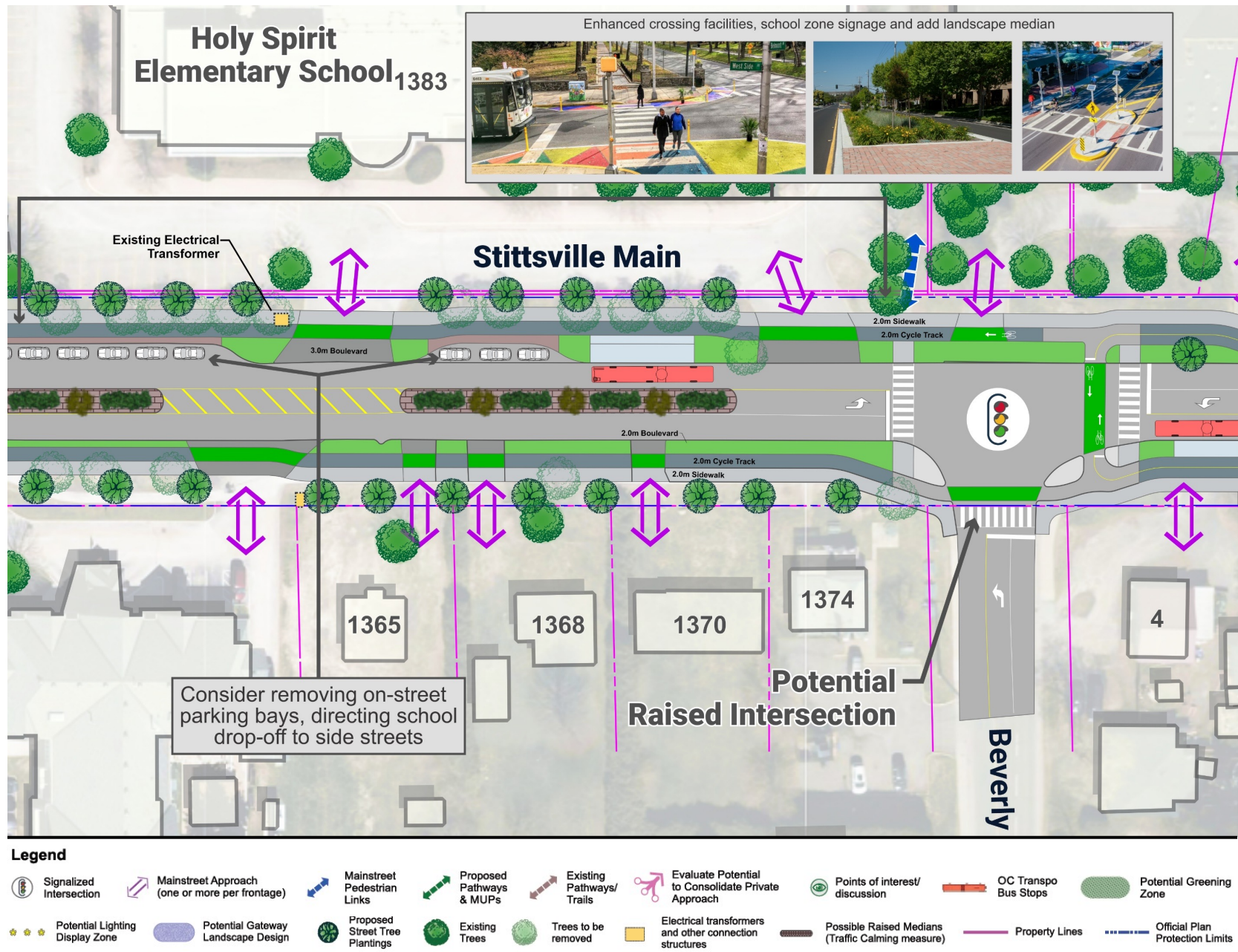


### Legend

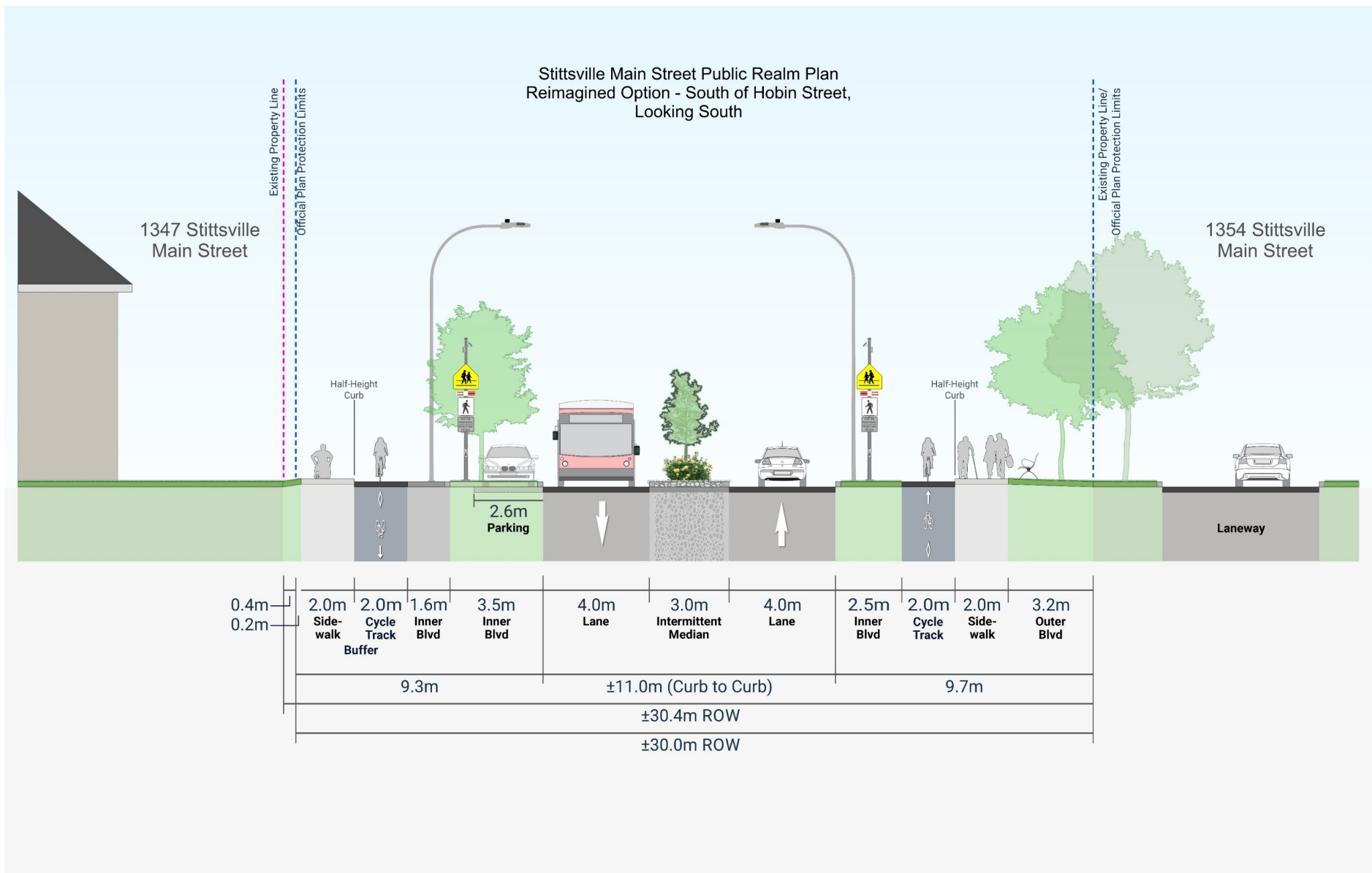


## 3. Hobin to Beverly - *Existing*





### 3. Hobin to Beverly - *Reimagined*



### 3. Complete Streets Cross Section - 30.0m ROW





### 3. Hobin to Beverly - *Imagery*



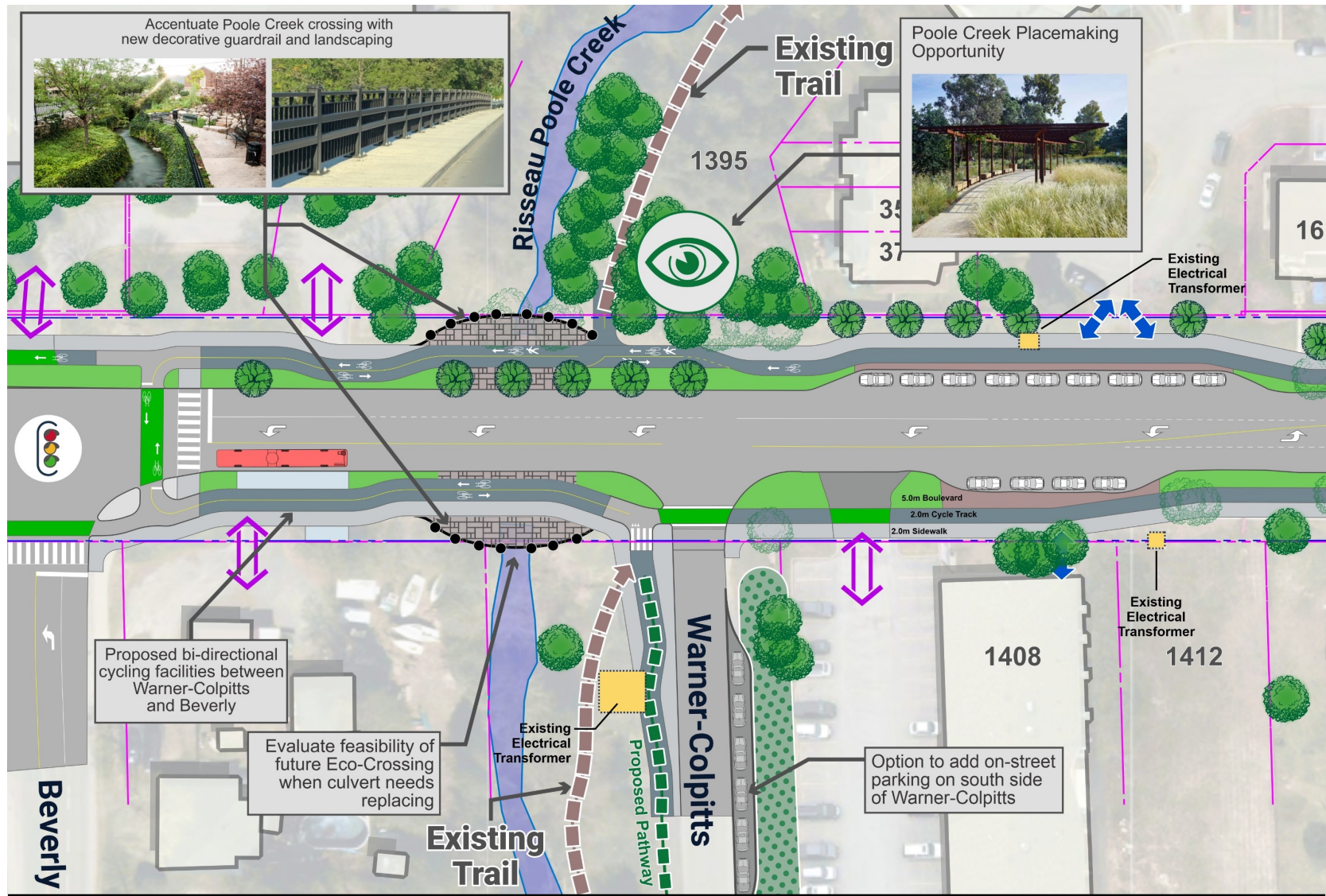


#### Legend

-  Signalized Intersection
-  Mainstreet Approach (one or more per frontage)
-  Mainstreet Pedestrian Links
-  Proposed Pathways & MUPs
-  Existing Pathways/ Trails
-  Evaluate Potential to Consolidate Private Approach
-  Points of interest/ discussion
-  OC Transpo Bus Stops
-  Potential Greening Zone
-  Potential Lighting Display Zone
-  Potential Gateway Landscape Design
-  Proposed Street Tree Plantings
-  Existing Trees
-  Trees to be removed
-  Electrical transformers and other connection structures
-  Possible Raised Medians (Traffic Calming measure)
-  Property Lines
-  Official Plan Protection Limits

## 4. Poole Creek Crossing - *Existing*





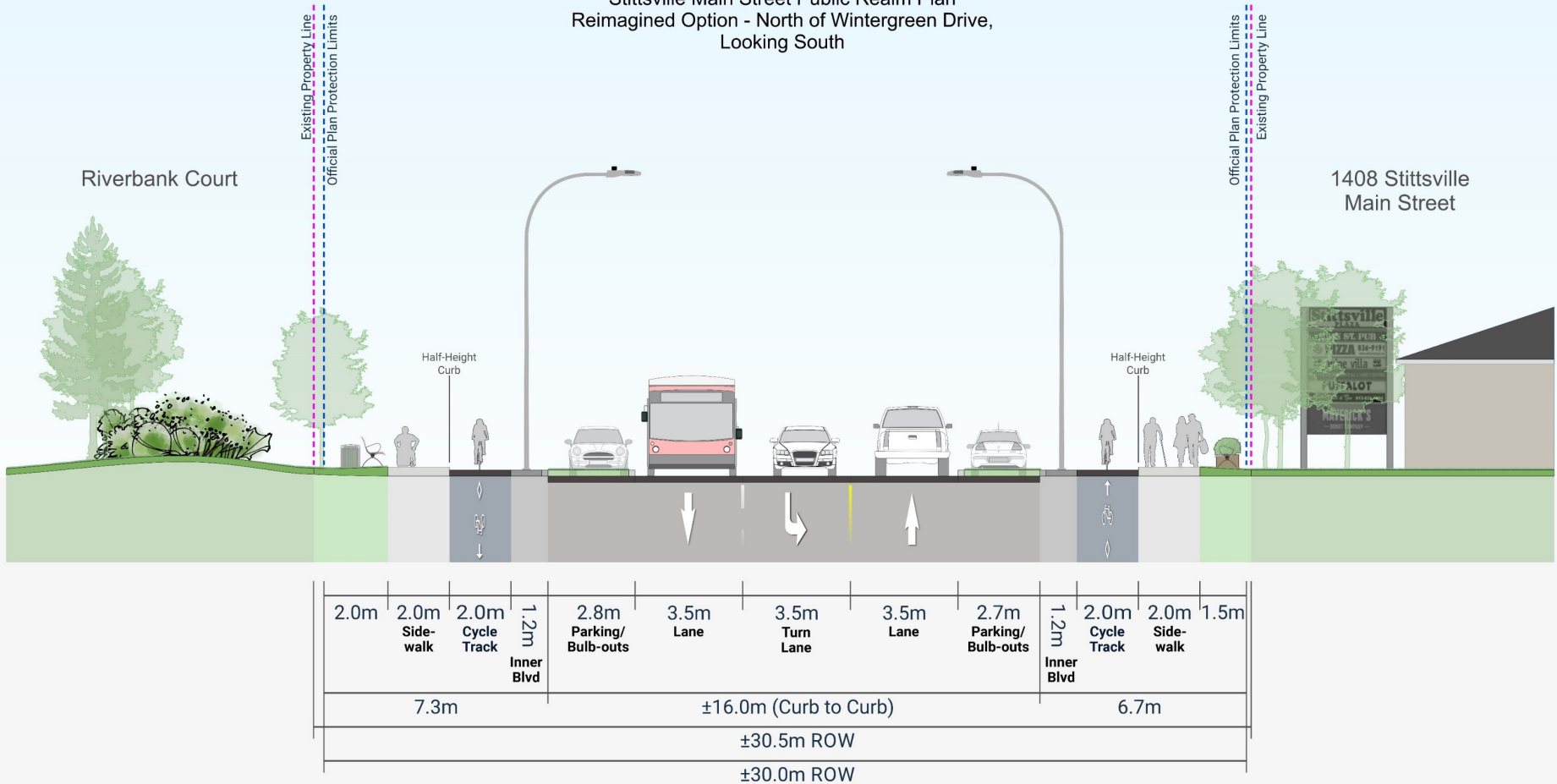
#### Legend



## 4. Poole Creek Crossing - *Reimagined*



Stittsville Main Street Public Realm Plan  
Reimagined Option - North of Wintergreen Drive,  
Looking South



## 4. Complete Streets Cross Section - 30.0m ROW

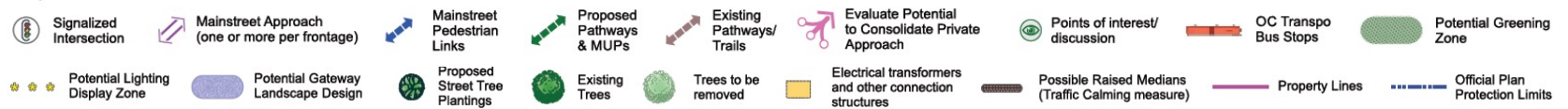


#### 4. Poole Creek Crossing - *Imagery*



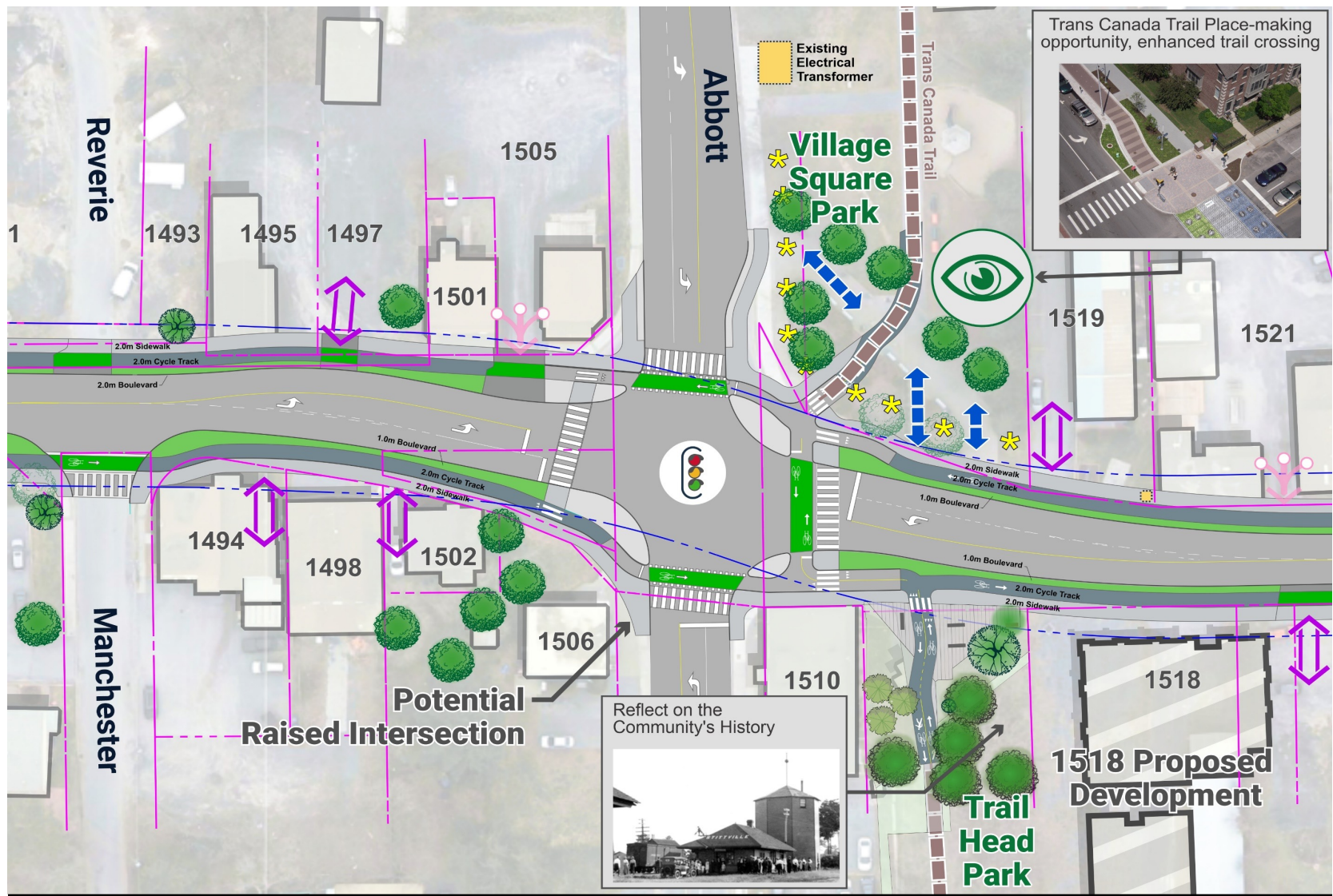


#### Legend



## 5. Abbott St. (TransCanada Trail Crossing) - *Existing*

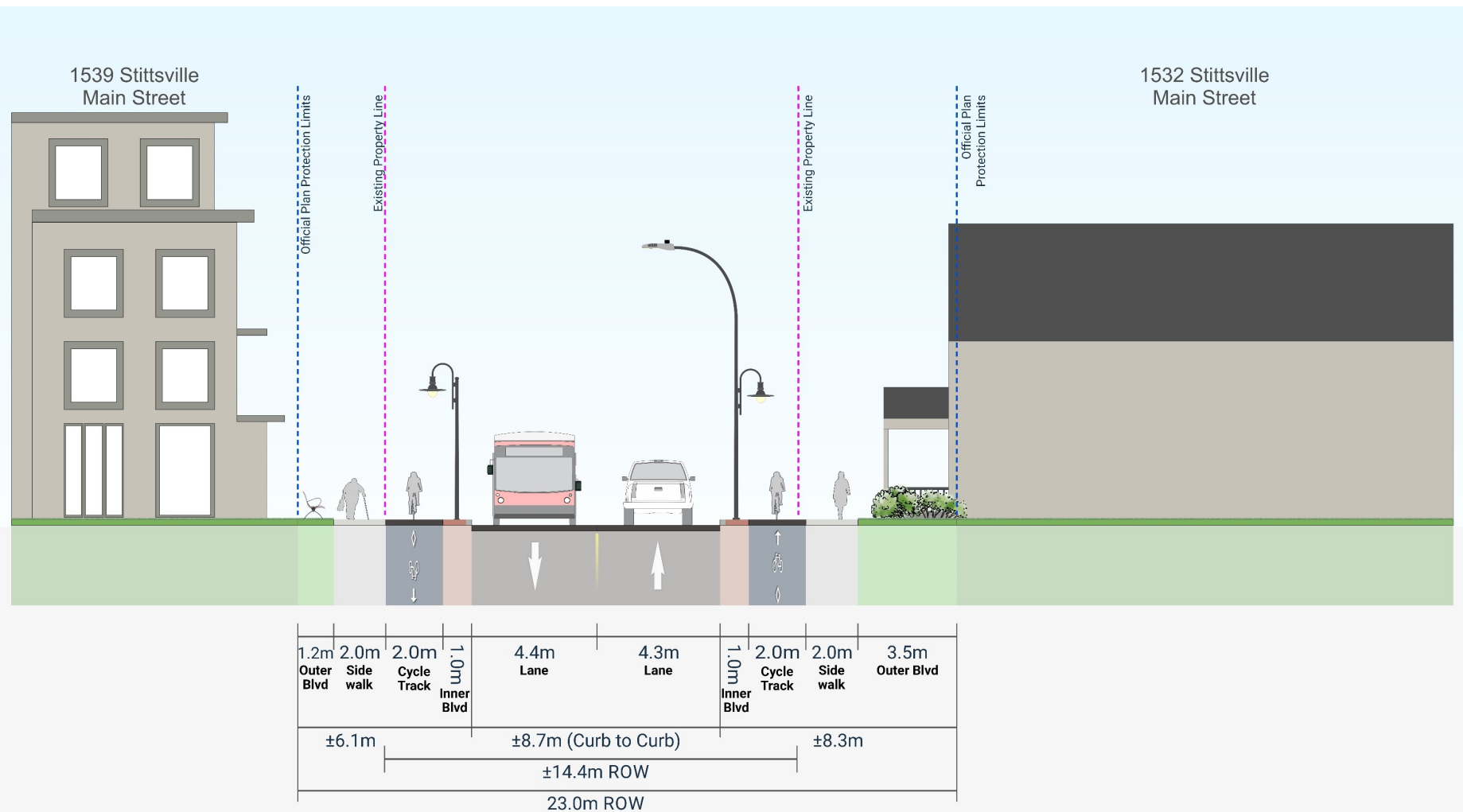




#### Legend

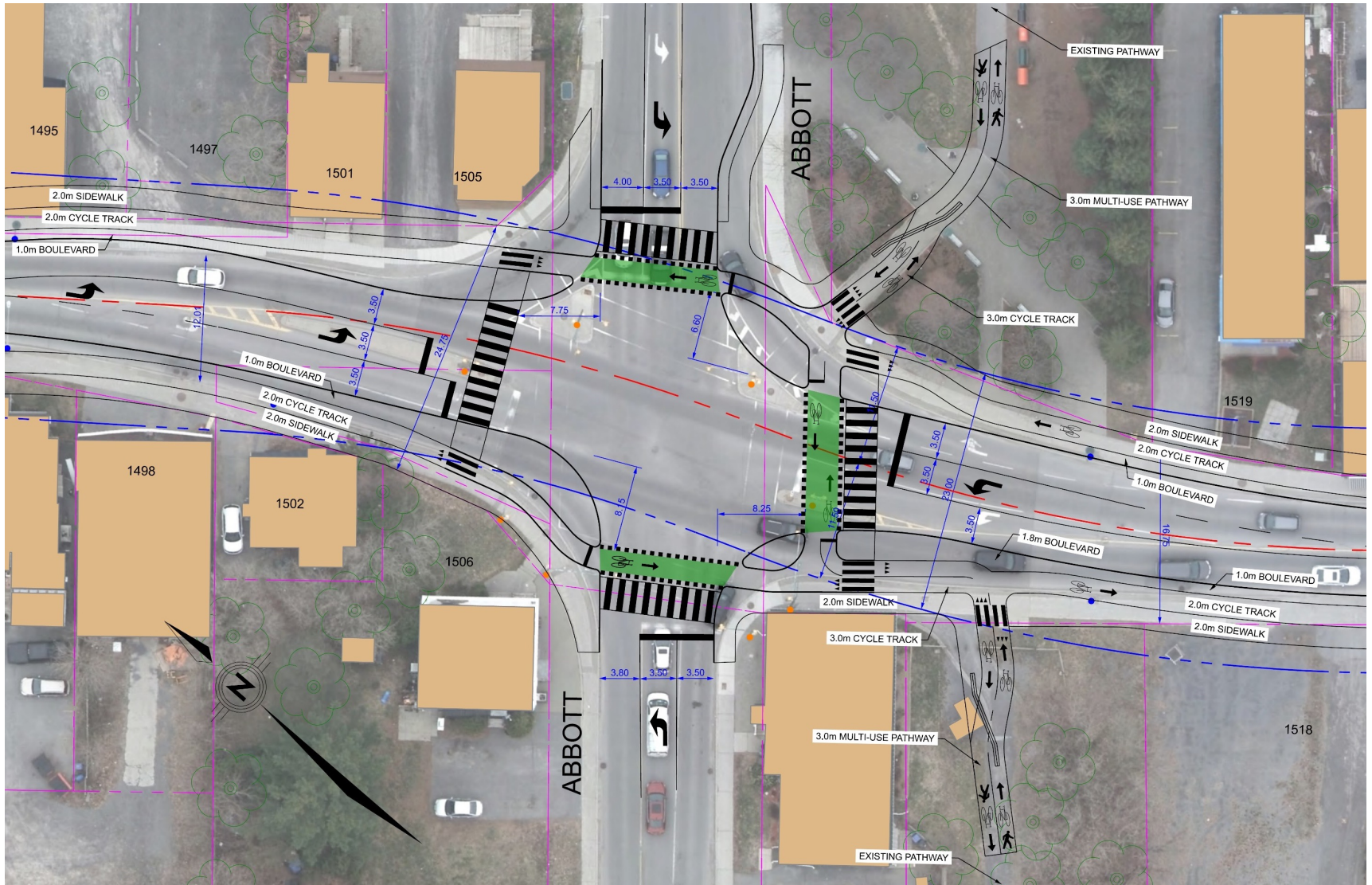


## 5. Abbott St. (TransCanada Trail Crossing) - *Reimagined*



## 5. Complete Streets Cross Section - 23.0m ROW





## 5. Abbott St. (TransCanada Trail Crossing) - Geometry





## 5. Abbott St. (TransCanada Trail Crossing) - Imagery





---

## 5. North of Abbott St. (Looking South)



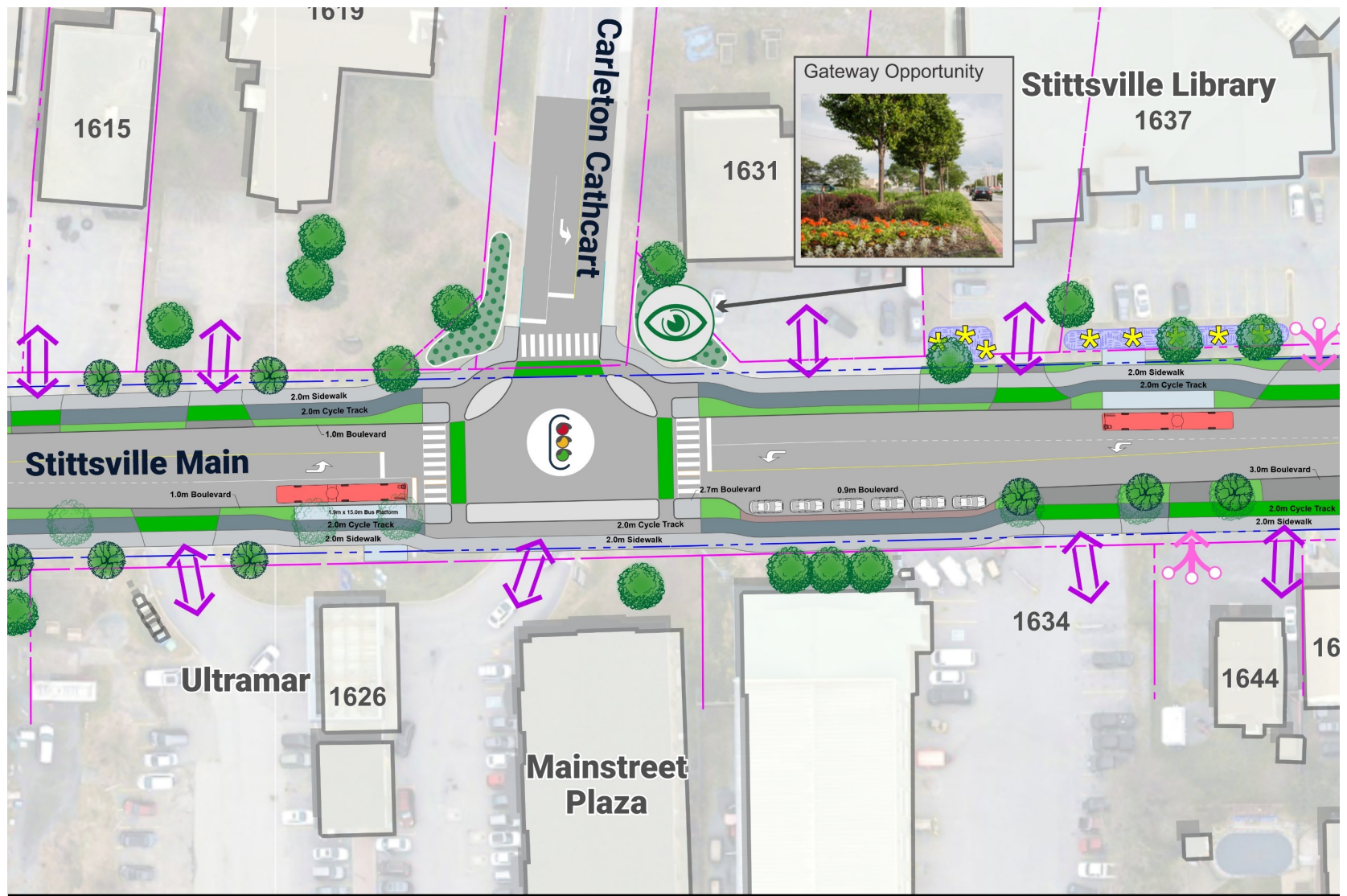


### Legend

-  Signalized Intersection
-  Mainstreet Approach (one or more per frontage)
-  Mainstreet Pedestrian Links
-  Proposed Pathways & MUPs
-  Existing Pathways/Trails
-  Evaluate Potential to Consolidate Private Approach
-  Points of interest/discussion
-  OC Transpo Bus Stops
-  Potential Greening Zone
-  Potential Lighting Display Zone
-  Potential Gateway Landscape Design
-  Proposed Street Tree Plantings
-  Existing Trees
-  Trees to be removed
-  Electrical transformers and other connection structures
-  Possible Raised Medians (Traffic Calming measure)
-  Property Lines
-  Official Plan Protection Limits

## 6. South Gateway (Carleton Cathcart) - *Existing*



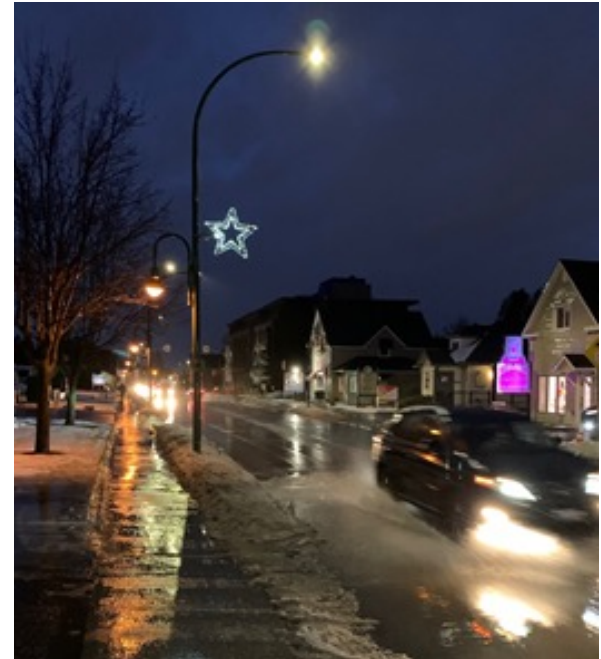


### Legend



## 6. South Gateway (Carleton Cathcart) - Reimagined





## 6. South Gateway (Carleton Cathcart) - Imagery



# Part 3: Implementation Possibilities

# Potential Public Realm Investments

1. North and South Gateway Landscaping & Signage
2. Street Tree Planting/Greening
3. Street Beautification/Furnishings
4. Active Transportation and Protected Intersections
5. Priority Bus Stops
6. Poole Creek Trail and Crossing
7. The Abbott Street/TransCanada Trail Crossing
8. Decorative Lighting Displays
9. New Street Lights



# The Implementation Toolbox - City

- Long-term Integrated road/water sewer reconstruction project not for 30 to 50 years
- Poole Creek Culvert Replacement – not scheduled
- Active Transportation Master Plan – Ongoing Study
- Current City programs (integrated street furnishings, greening, street lighting, etc)
- Transportation operational and safety programs (road safety action plan, traffic calming, PXOs, cycling program, transit priority program, etc)
- Pilot projects?

# The Implementation Toolbox - Other

- ROW Widenings and frontage zone improvements via development approval
- Stittsville Business Association Investments (banners, plantings, etc)
- Mississippi Valley Conservation Authority (Poole Creek)
- Environmental Advocacy/Stewardship Groups
- Local Schools
- Other creative ideas?



# **Part 4: Pedestrian Street Lighting Renewal**

# Overview

- Pedestrian lights (green poles) in Village Core, Village Square Park and at Poole Creek
- One of the defining elements of the district and important to its charm and sense of place
- Infrastructure is deteriorating and in need of replacement and upgrades
- Potential to be one of the first components of the Public Realm Plan implemented
- Funding will need to be secured prior to replacement - Staff exploring opportunities
- An approved Public Realm Plan will increase likelihood of successful grant applications, etc. and will expedite renewal process





# Existing Lighting Conditions

Decorative lighting is at end of lifecycle and showing its age:

- Significant damage to bases, poles and luminaires
- Not energy efficient or Dark Sky compliant
- Replacement parts no longer available from manufacturer
- Some green poles replaced with unpainted aluminum poles leading to discontinuous character



# Objective

Update the pedestrian lights to support placemaking in the Village Core, create a pleasant, pedestrian-friendly environment and support local businesses by creating an attractive destination for residents and visitors.

- Replace 44 poles, fixtures and luminaires between Wintergreen Dr. and Brae Cr.
- Replace 4 lights near Poole Creek
- Replace 5 lights in Village Square Park
- Replace 6 lights in the municipal parking lot
- Upgrade luminaires to modern technology
- Support community uses (e.g. banners, decorations, flower baskets)
- Select a new pedestrian-scale luminaire design that reinforces a strong sense of place in the Village Core





# Recommendations

With collaboration and ongoing input from the members of the Public Realm Plan's Community Working Group, City Staff are making the following recommendations:

1. Switch from green to black fixtures
  - Easier to maintain and wears better
  - Higher contrast is easier to see for those with vision loss
  - Easiest to match with other streetscape furniture (e.g. benches)
2. Maintain the historical symmetry of fixtures with matching side-mounted pedestrian lights on both sides of the street
3. Upgrade luminaires to energy efficient, Dark Sky compliant fixtures



# Recommendations Cont'd

4. Install electrical outlets on all poles to support community pageantry
5. Maintain brackets for banners to promote local events, themes, etc.
6. Add brackets to allow for the possibility of hanging flower baskets
7. Select luminaires that reflect Stittsville's history, the prevalent architectural styles and captures desired aesthetic for the traditional mainstreet





# Part 5: Question & Answer

# Discussion Questions

1. Which of the Public Realm improvements do you think will be most successful?
2. Is there anything missing from the Plan?
3. Will the street be accessible and inclusive to all users?
4. Will safety be improved for all modes?
5. Will the street move all vehicles efficiently?
6. Does the Plan adequately support businesses? How can businesses support the Plan?
7. What suggestions do you have to help expedite the plan?



# Q&A

*This slide is left intentionally blank*