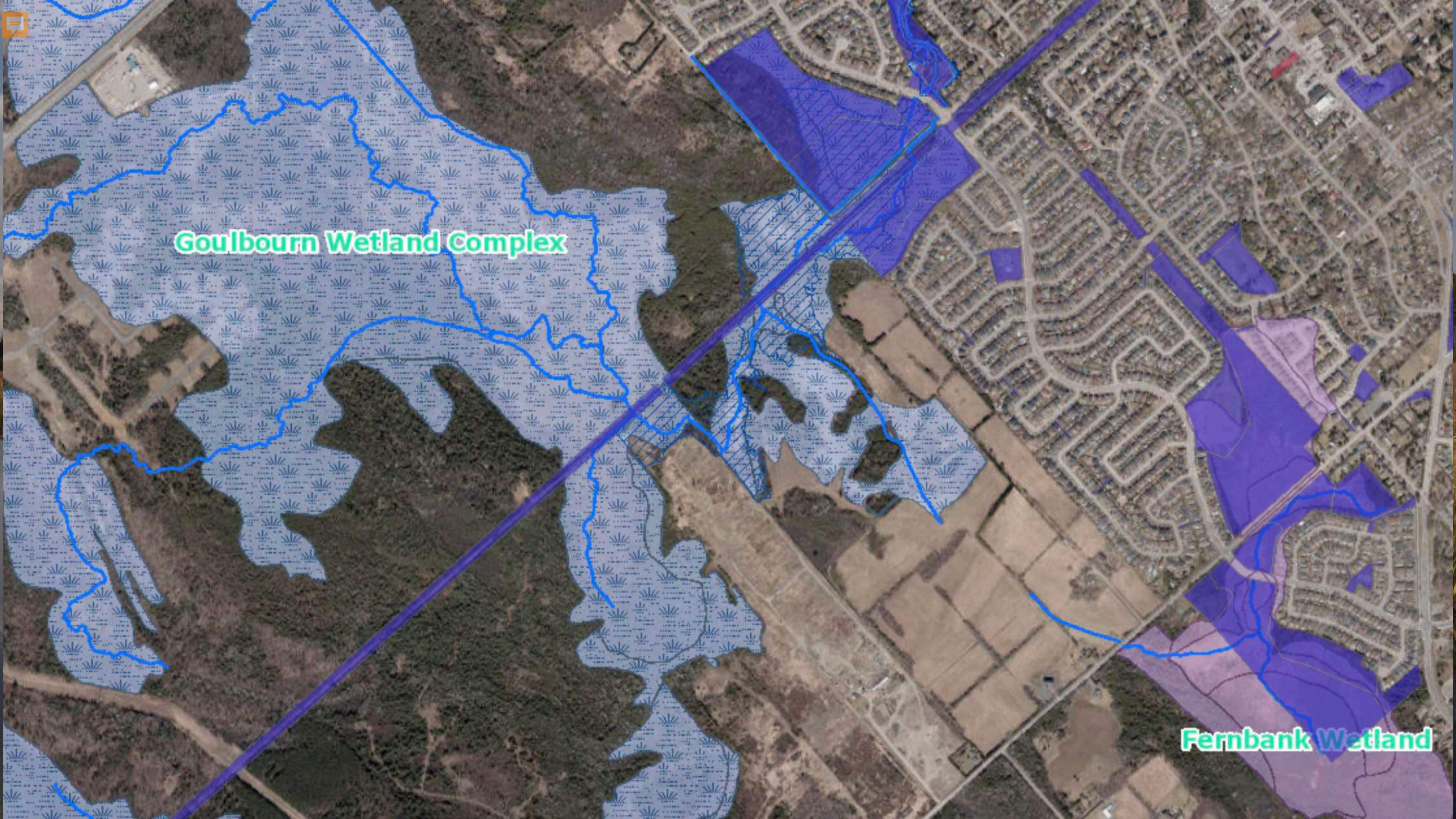


Protecting our Wetlands

Help Protect Stittsville's Wetlands – Community Meeting on June 26, 2023
Janet Stavinga



Goulbourn Wetland Complex

Fernbank Wetland

Threats to Wetlands

Land conversion

Drainage for development and agriculture

Invasive species

Pollution

Climate change

Artificial modification of Water Levels

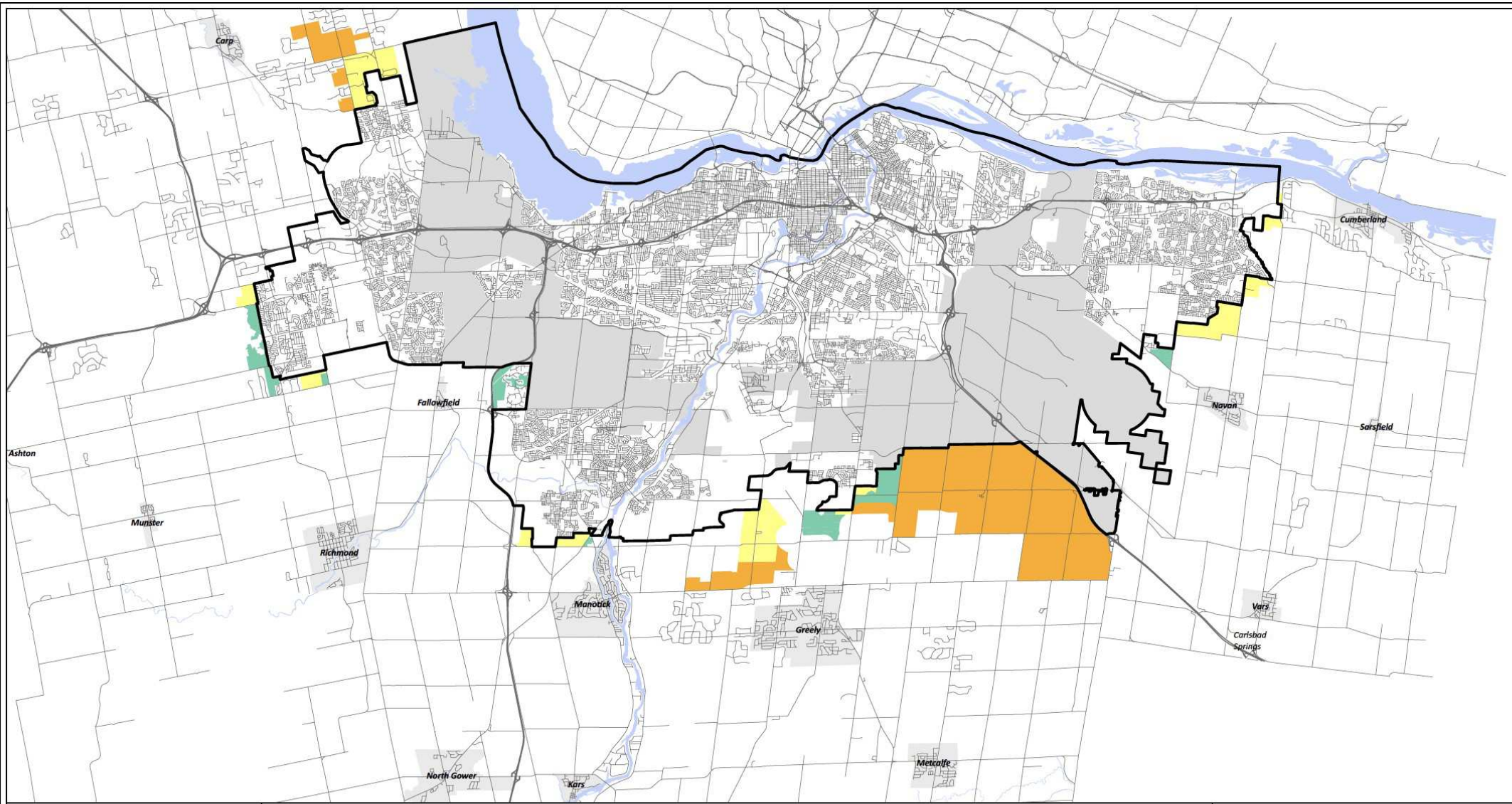





Threats to Wetlands

Abandonment of the Wetland Conservation Strategy for Ontario 2017-2030 as noted in the 2021 Ontario Auditor General's Report on the Environment

Bill 23 More Homes Built Faster Act, 2022








OFFICIAL PLAN


URBAN BOUNDARY EXPANSION STUDY




Land Evaluation Categories

 Category 1 Lands

 Category 2 Lands

 Category 3 Lands

 Urban Boundary (Official Plan)

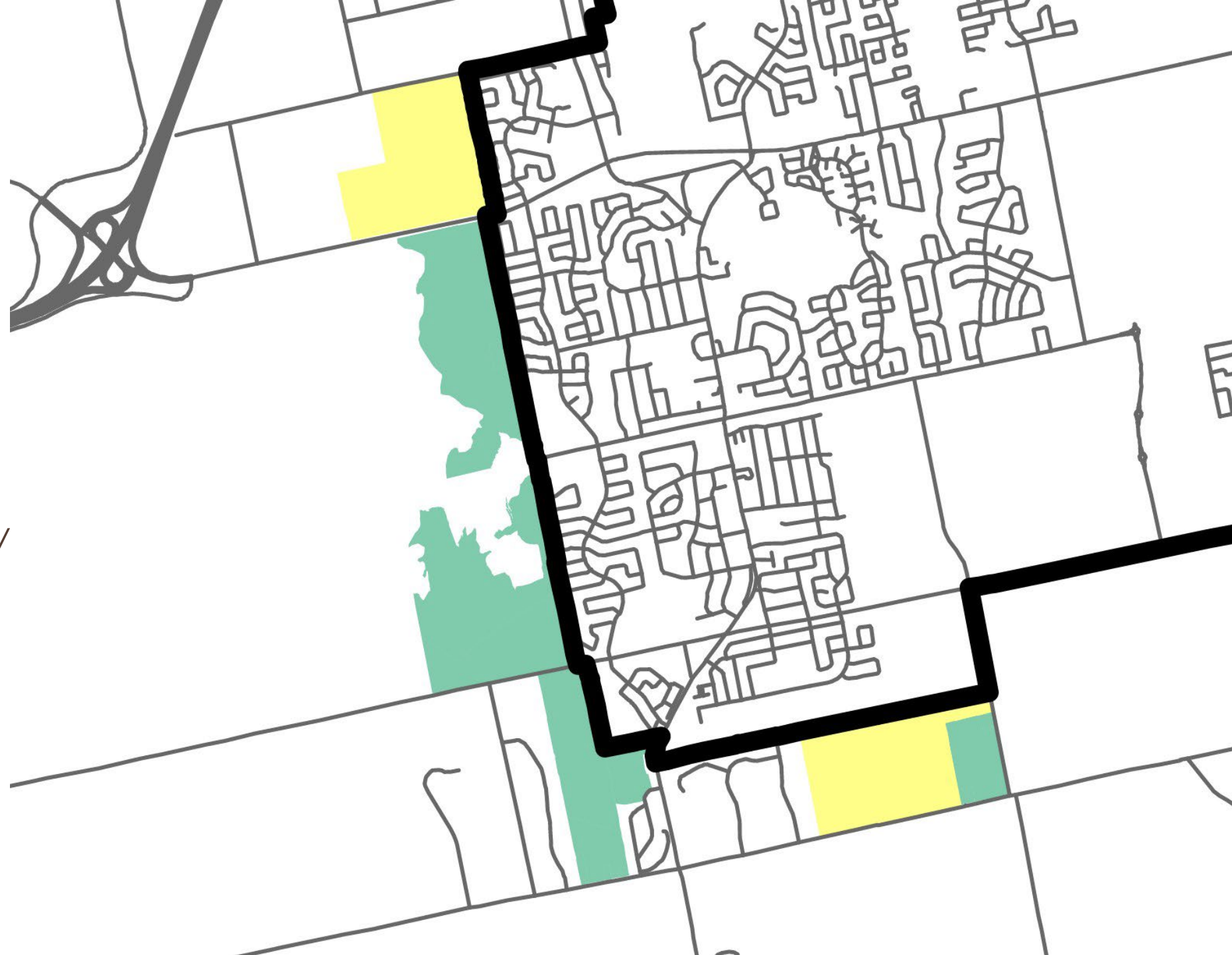


Planning, Infrastructure and Economic Development Department,
Geospatial Analysis, Technology and Solutions
Services de la planification, de l'infrastructure et du développement économique,
Analyse géospatiale, technologie et solutions.



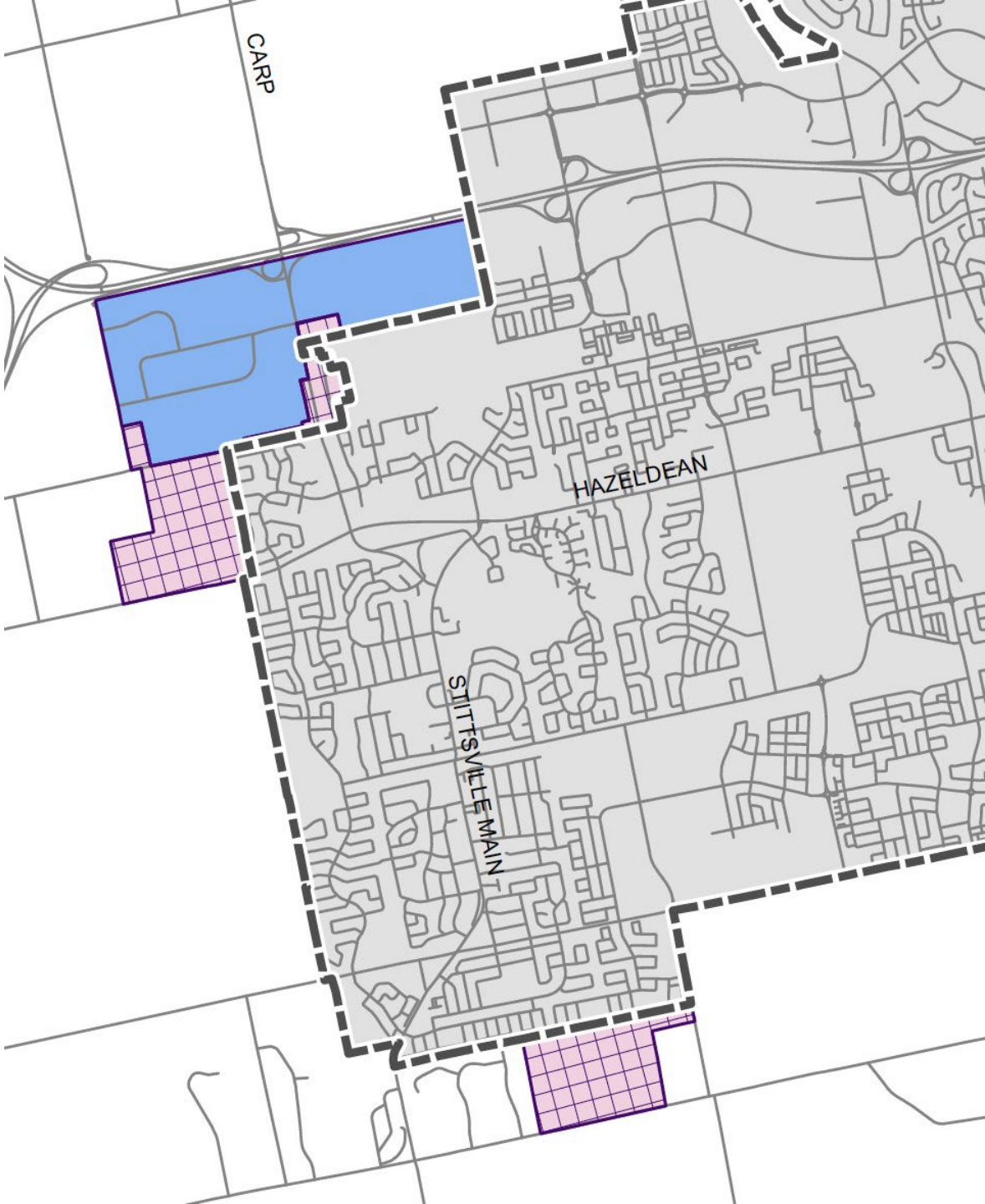
Official Plan
Urban Boundary
Expansion Study
Land Evaluation
Categories in proximity
to Stittsville

Yellow: Category 1
Green: Category 2



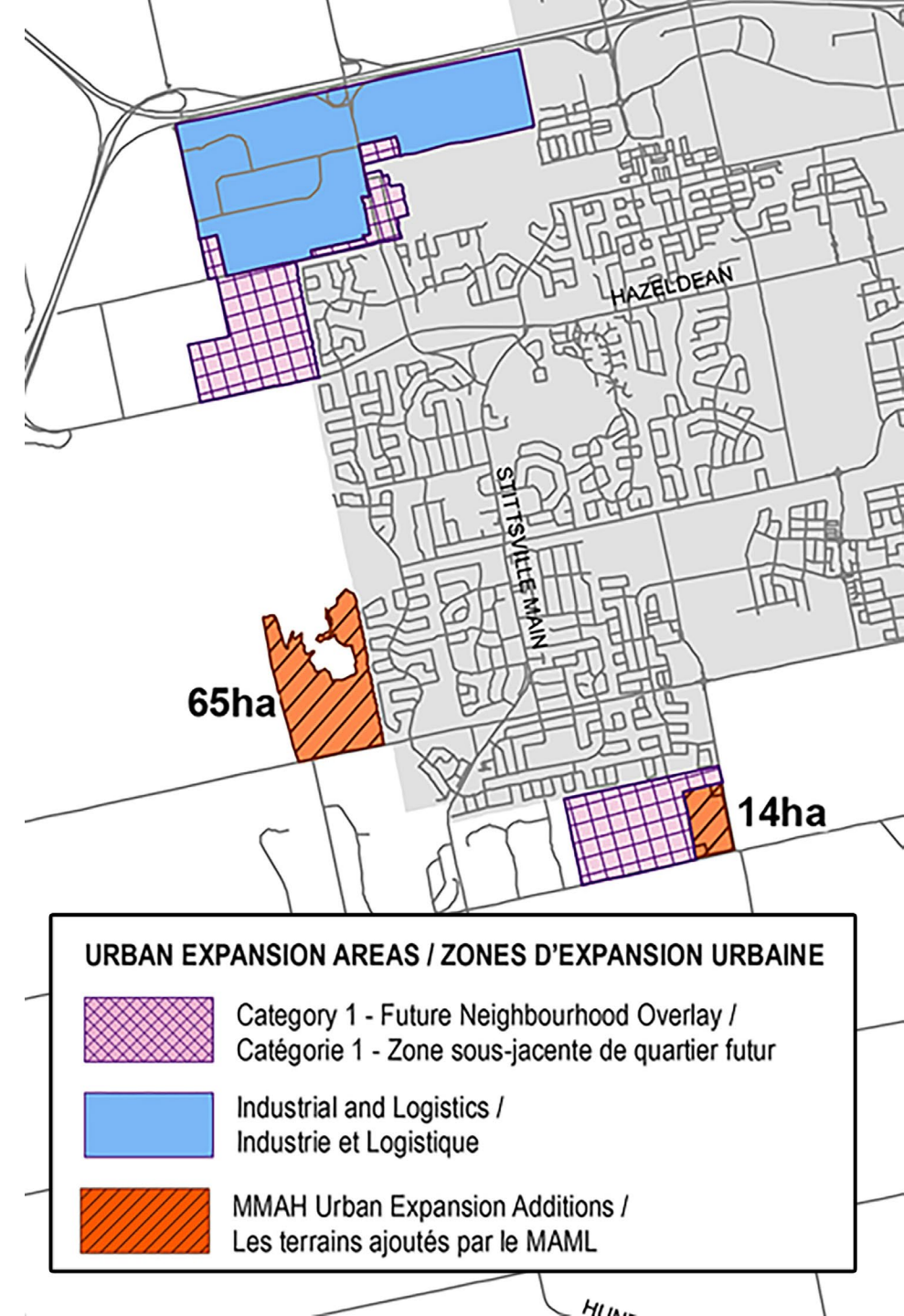


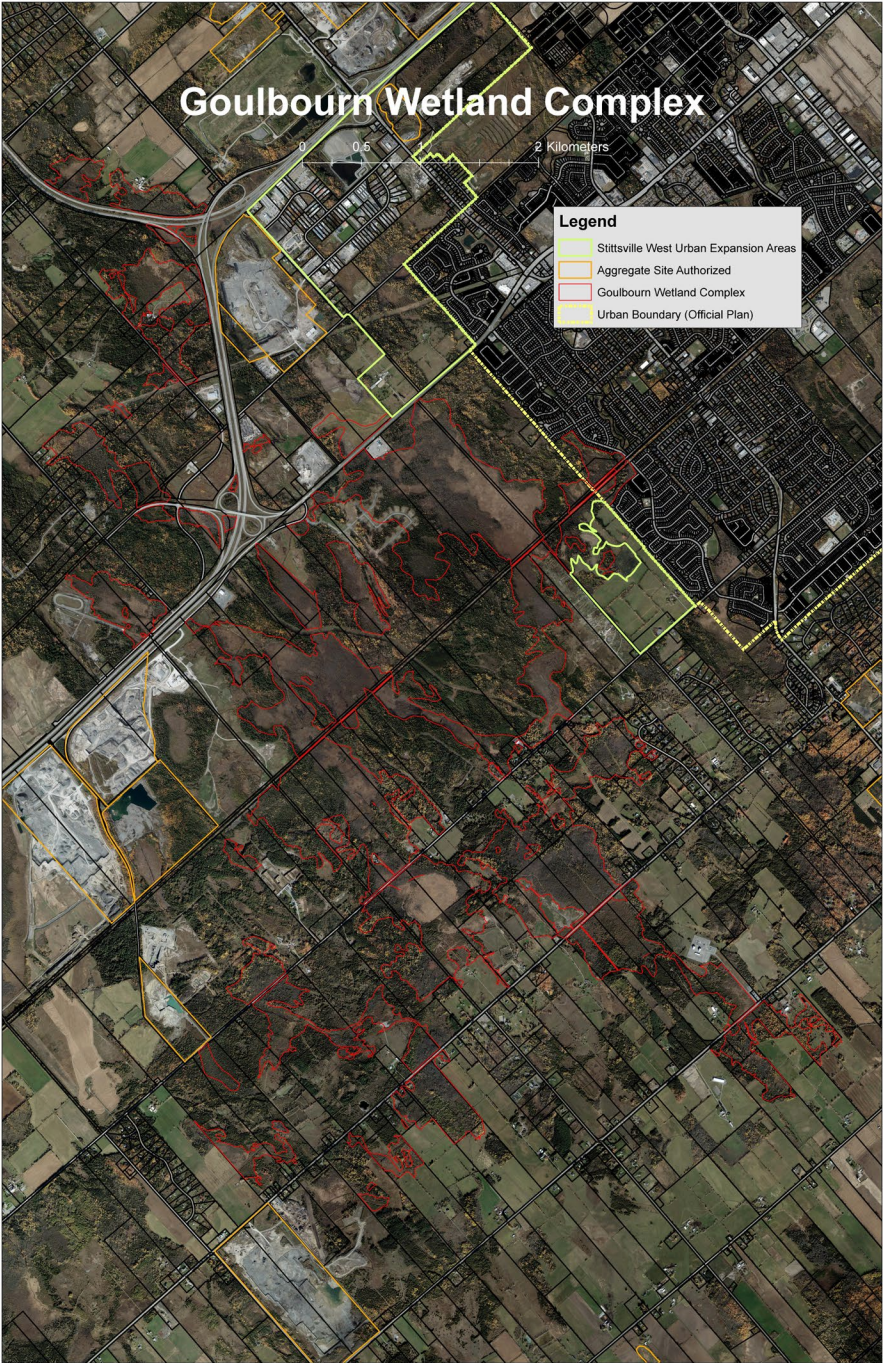
Ottawa City Council
Expansion Land Approvals in
proximity to Stittsville
November 2021





City of Ottawa Official Plan
Expansion Lands approved in proximity
to Stittsville by the
Minister of Municipal Affairs and Housing
November 2022







Lessons Learned

Anticipate, anticipate and anticipate more – be ahead of the curve

Cannot count on provincial legislation, regulations and policy statements to protect wetlands

Open doors of communication with private landowners

Mobilize the Community

Develop strategies and action plans to protect wetlands

- Build awareness as to why wetlands matter

- Build Partnerships

- Bring in Knowledge Holders

- Explore Land Trusts, Ecological Gifts, Land Acquisition



A Call for Community Action

“What is the use of a fine house if you haven’t got a tolerable planet to put it on.”

Henry David Thoreau

My sincerest thanks to Sylvie Sabourin for her permission to use the photographs contained in this presentation. Sylvie is a photographer and long-time Stittsville resident who advocates for Nature.