



**STAGE**  
**ETAPE**

**2**

A decorative graphic consisting of four thick, diagonal lines meeting at a central point. The top-left line is blue, the top-right is red, the bottom-right is green, and the bottom-left is yellow. Each line has a circular gradient effect.



# Montréal Station





# Jeanne D'Arc Station



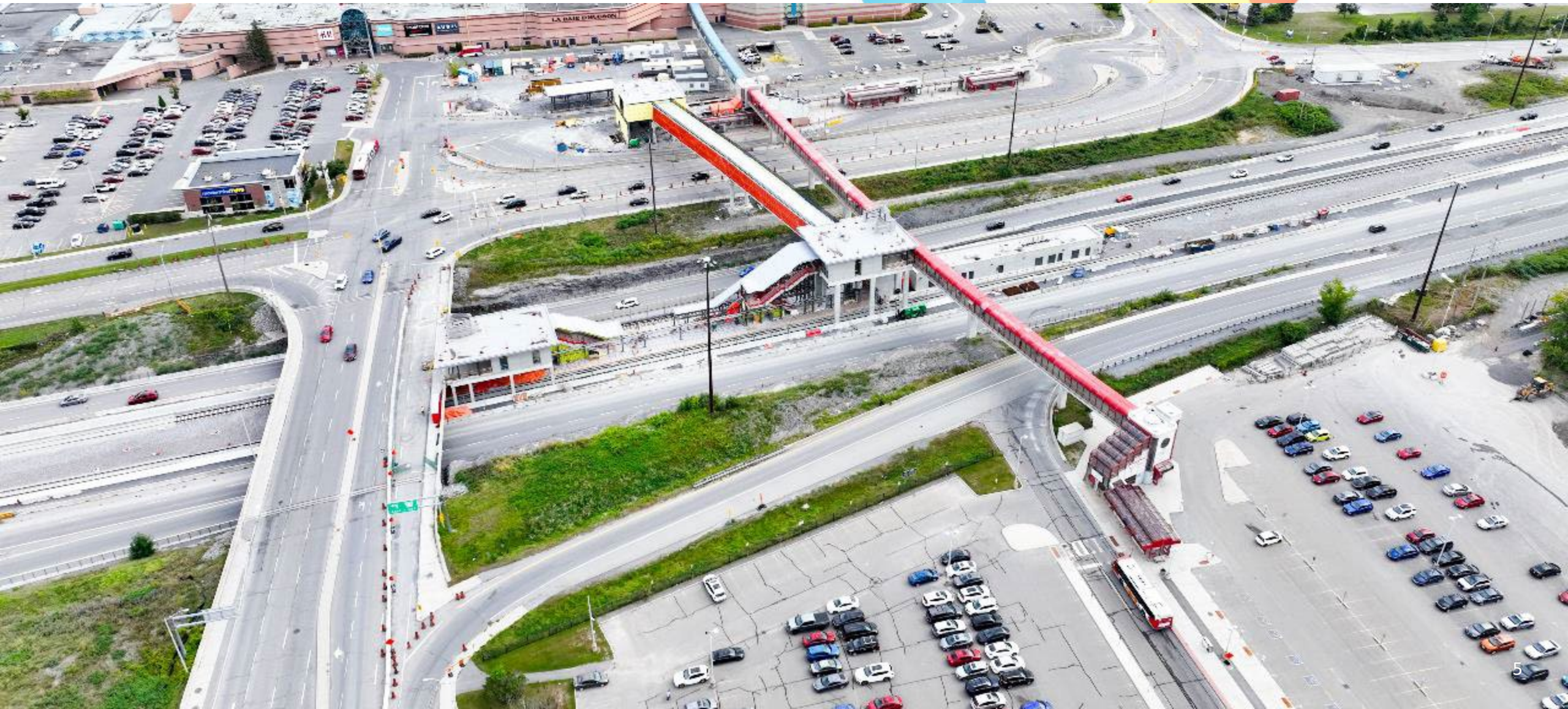


# Convent Glen Station





# Place d'Orléans Station





# Trim Station





# Upcoming East Activities

- 🎯 **Through 2023:** Progress on all stations
- 🎯 **Fall:** Completion of rail installation
- 🎯 **Winter:** Continued OCS installation
- 🎯 **Winter:** Initial vehicle testing



# East Traffic and Mobility Impacts

Location	Timeline	Traffic & Mobility Impacts
Highway 174	Through to revenue service	Lane and ramp closures as required
Montreal Road	Through to revenue service	Lane closures under OR 174 overpass and ramp closures to complete utility work.
Jeanne d'Arc Blvd	Through to revenue service	Various traffic configurations including long term lane reductions on the bridge.
Orleans Blvd	Through to summer 2024	Long term lane closures
Champlain Street	Final timeline under review	Southbound direction is reduced to a single lane to provide access for station work



# East Project Schedule Update

Work Activity	2023		2024			2025				
1. Completion of Track										
2. Systems Installation	█	█								
3. Systemwide Commissioning	█	█	█							
4. Operations & Maintenance Training			█	█	█					
5. EWC Handover to City						◆				
6. Trial Running						█				
7. Trial Operations → Passenger Service						█	█	█	█	



A decorative graphic consisting of four thick, diagonal lines meeting at a central point. The lines are colored blue, red, yellow, and green, and each has a circular gradient effect. The text is overlaid on this graphic.

**WEST** EXTENSION  
PROLONGEMENT **OUEST**



# Westboro Station



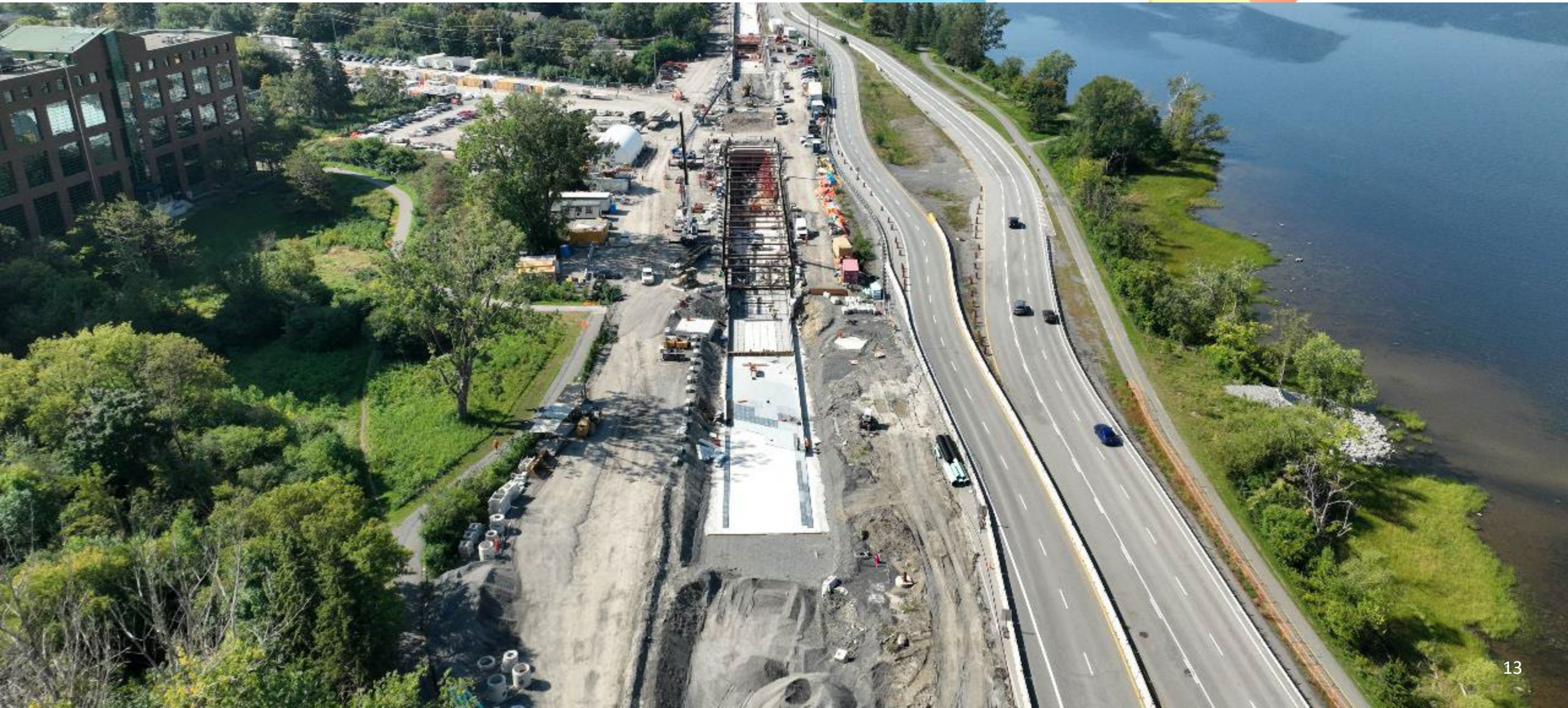


# Kìchì Sìbì Station



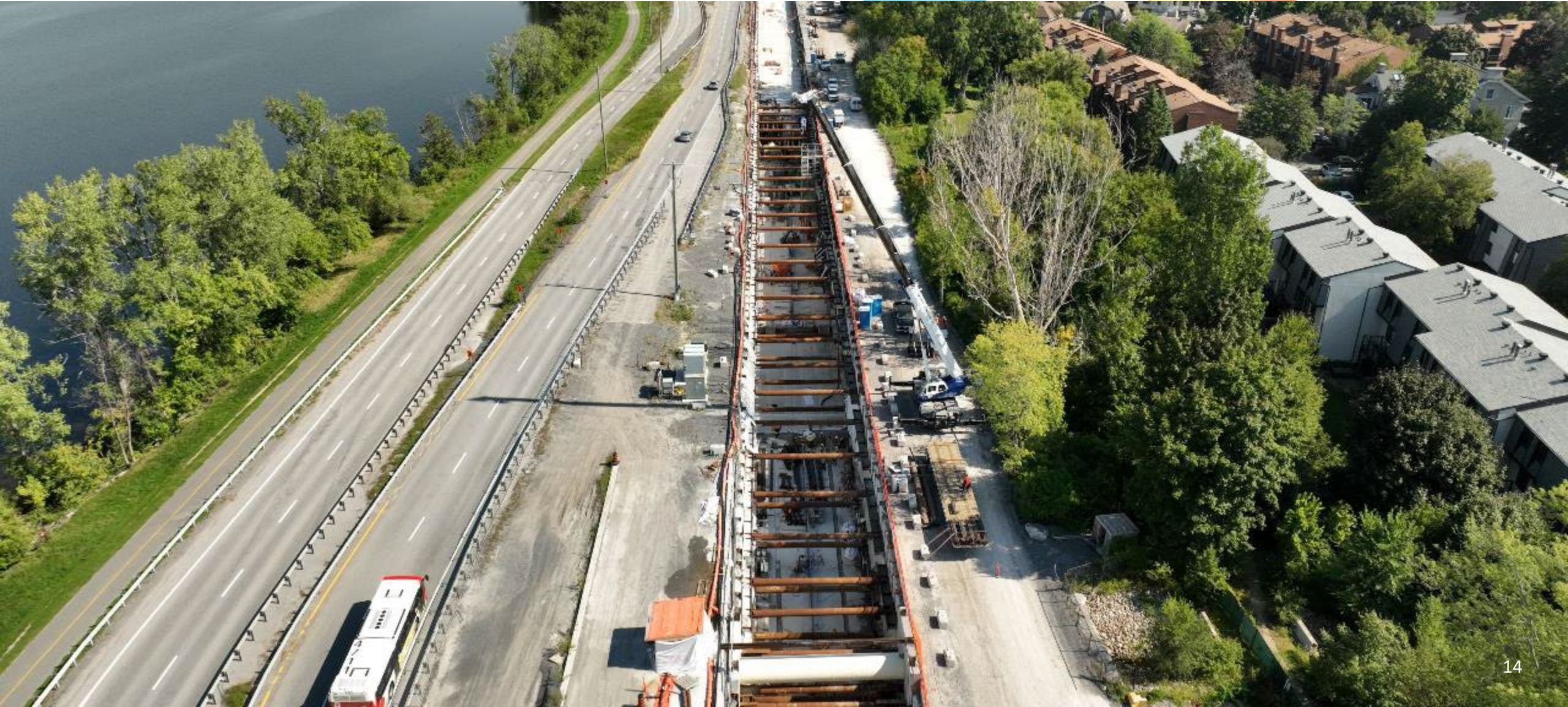


# Parkway Cut & Cover Tunnel





# Parkway Cut & Cover Tunnel (Cont'd)





# Byron Linear Park



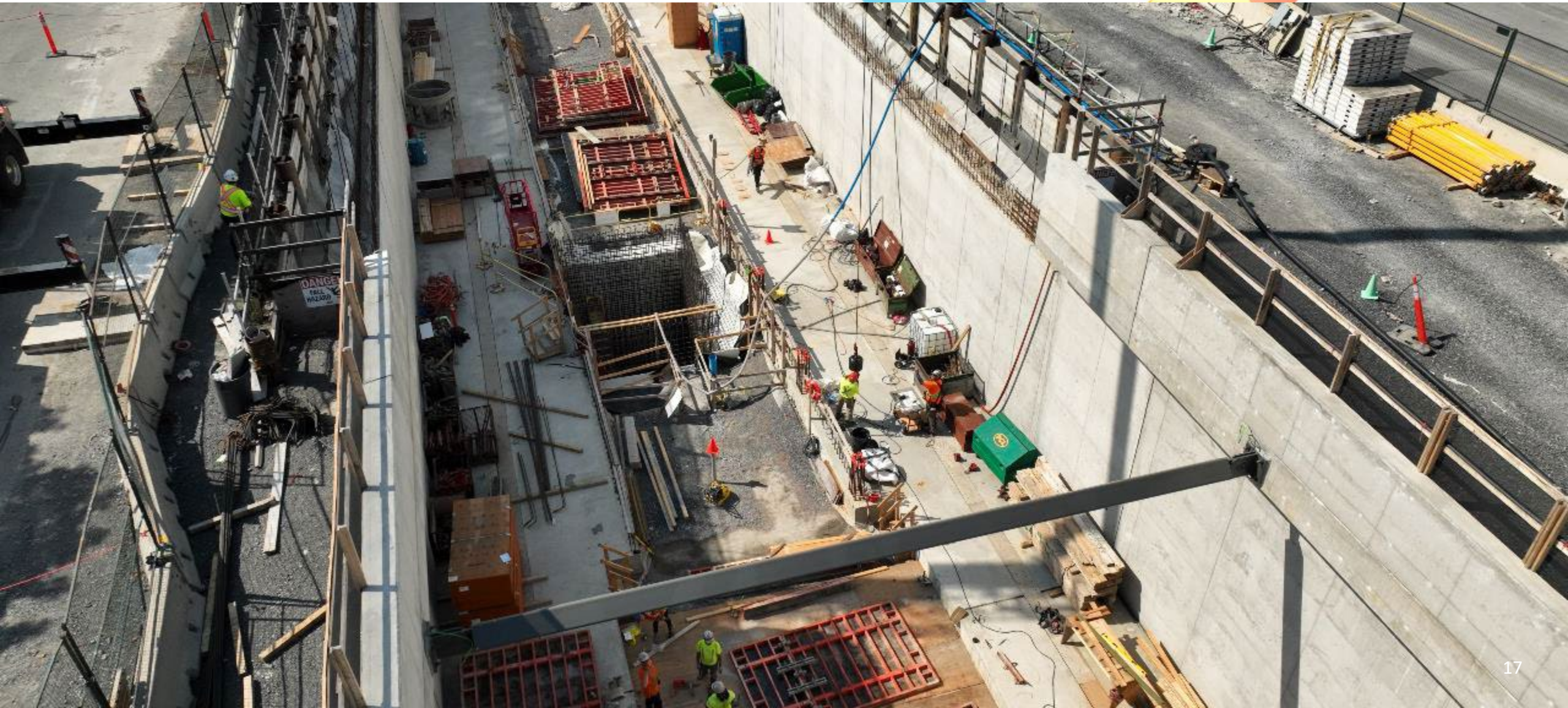


# Byron Cut and Cover Tunnel (Cont'd)





# Sherbourne Station





# New Orchard Station





# Richmond Road Portal





# Lincoln Fields Station





# Iris Station Area



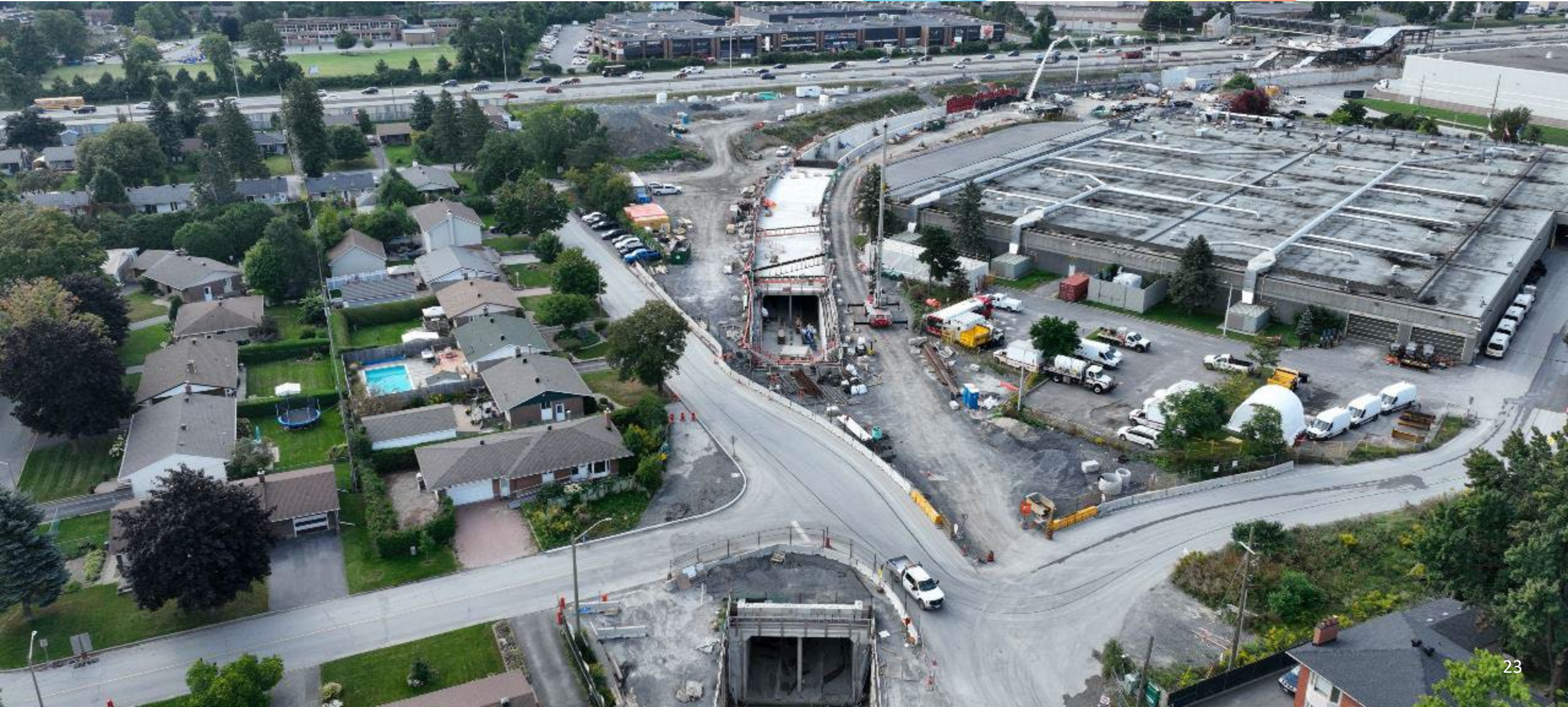


# Algonquin Station





# Connaught Tunnel





# Queensview Station





# Bayshore Station





# Moodie Station





# Light Maintenance and Storage Facility





# Upcoming West Activities

- 🎯 **Through 2023:** Excavation and covering of Cut and Cover Tunnels will continue
- 🎯 **Through 2023:** Backfilling of the Cut and Cover Tunnels will continue
- 🎯 **Through 2023:** Rail installation continues
- 🎯 **2024:** OCS pole installation will begin



# West Traffic and Mobility Impacts

Location	Timeline	Traffic & Mobility Impacts
<b>Carling Avenue (Lincoln Fields)</b>	Through to revenue service	Entrance to Lincoln Fields Station shifted west and south of Carling with the addition of a new intersection
<b>Transitway (Pinecrest to Bayshore)</b>	Through to revenue service	Buses detoured onto Highway 417
<b>Highway 417 and Pinecrest Interchange</b>	Timelines under review	Westbound off-ramp closed to traffic
<b>Transitway (Iris to Baseline)</b>	Through to revenue service	Closure of Transitway with buses detoured onto Woodroffe Avenue. Iris alignment is in final configuration
<b>Carling Avenue (Lincoln Fields)</b>	Through to revenue service	Entrance to Lincoln Fields Station shifted west and south of Carling with the addition of a new intersection



# West Traffic and Mobility Impacts (Cont'd)

Location	Timeline	Traffic & Mobility Impacts
<b>Corkstown Road</b>	Through 2024	Multiple flagging lane closure to assist with construction and landscaping. Closures at Moodie & Corkstown for intersection construction
<b>Kichi Zibī Mīkan</b>	Through to revenue service	Multiple long term lane closures to finish road modifications and realignment of the road
<b>Iris Street (between the Transitway and Adirondack Avenue)</b>	Until end of 2023	Minor lane closures for utility relocation to service Iris Station
<b>Richmond Road (between New Orchard Avenue and McEwen Avenue)</b>	Timelines under review	Richmond Westbound closed to allow for cut and cover works. Detour on Ambleside Drive. Multiple closures for Richmond Complete Streets project.



# West Project Schedule Update

Work Activity	2023	2024	2025	2026
1. Light Maintenance Facility	█			
2. Parkway Tunnel Construction	█	█	█	
3. Completion of Track & Systems Installation	█	█	█	
4. Systemwide Commissioning			█	█
5. Operations & Maintenance Training				█
6. EWC Handover to City				◆
7. Trial Running				█
8. Trial Operations → Passenger Service				█



# *Train*

# **SOUTH** EXTENSION PROLONGEMENT **SUD**



# Bayview Station





# Corso Italia Station



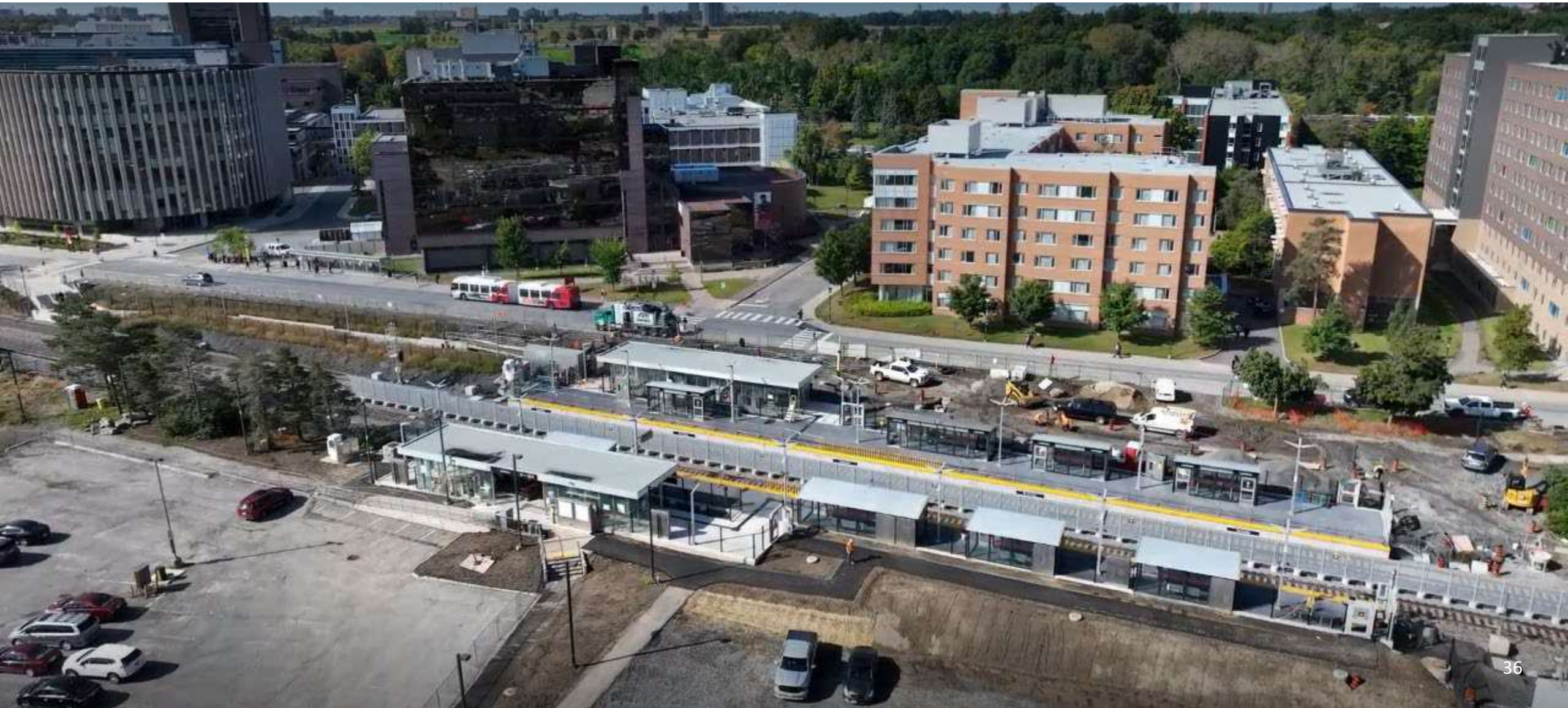


# Dow's Lake Station





# Carleton Station





# Walkley Station



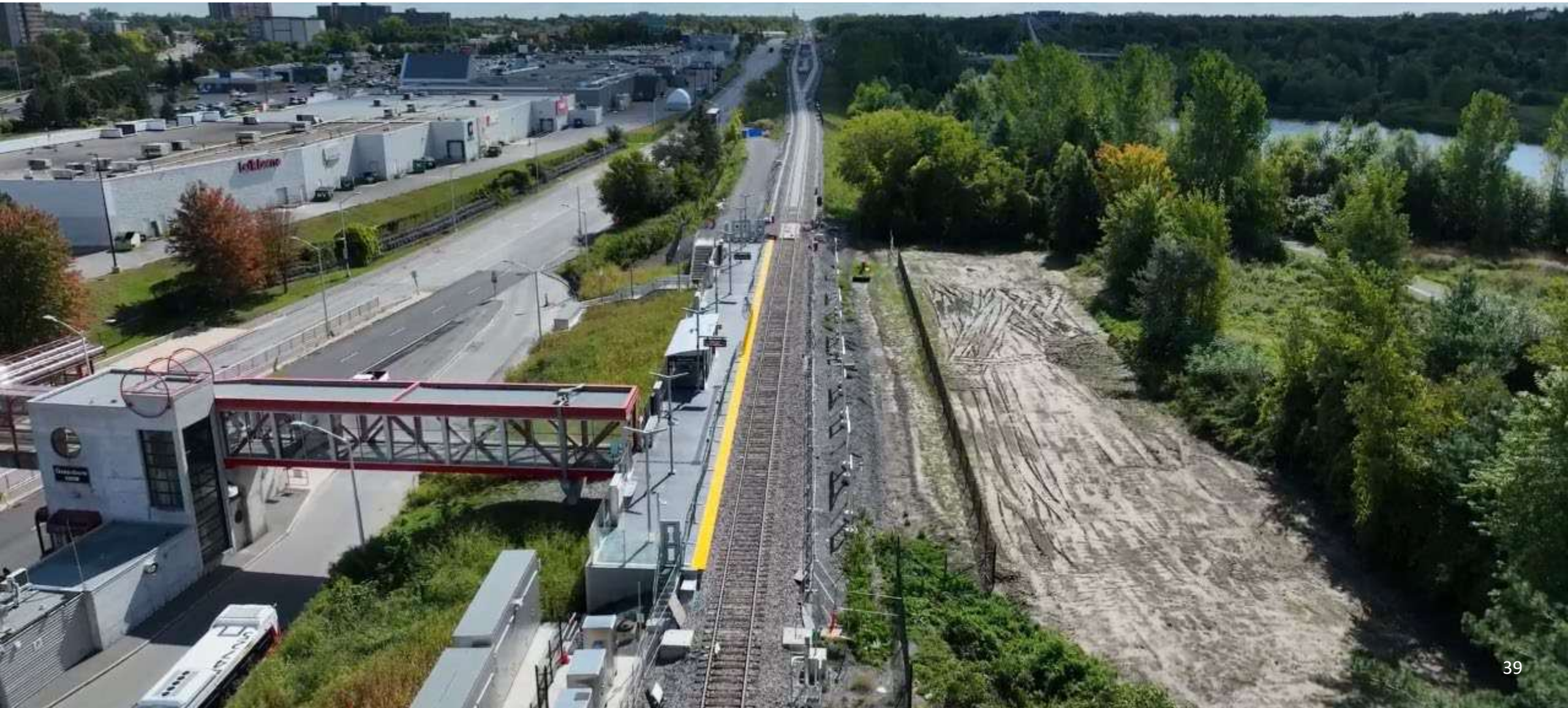


# Albion Yard





# Greenboro Station





# South Keys Station





# Leitrim Station





# Leitrim Station Bus Loop





# Bowesville Station





# Bowesville Park & Ride





# Limebank Station





# Uplands Station





# Airport Station





# Traffic and Mobility Impacts

Location	Timeline	Traffic & Mobility Impacts
<b>MUP at South Keys</b>	Fall 2023	MUP on the west side of South Keys Station will be relocated in different stages throughout the year to accommodate track construction
<b>MUP at Walkley</b>	Fall 2023	The temporary closure of the MUP on the west side of the Marriott Hotel and Warehouse Lofts is required for Walkley Station construction
<b>Trillium MUP at Carling</b>	Fall 2023	MUP closed north of Carling to support utility/station construction; pedestrian and cyclist detours are in place



# Traffic and Mobility Impacts (Cont'd)

Location	Timeline	Traffic & Mobility Impacts
Hunt Club Road Lane Closures	Fall 2023	Lane closures are required on Hunt Club Road to support Line 2 construction work
Earl Armstrong Road & Bowesville Road	Fall 2023	Multiple lane closures to re-align the intersection and install a traffic light
Limebank & rail crossing	Fall 2023	New intersection work
Earl Armstrong & Main Street	Fall 2023	New intersection work



# **O-Train South Rail Activation Management Program**





# Scorecard Update

- Rail Activation Management Program (RAMP) reporting identifies critical activities essential for a successful public launch.
- The Stage 2 O-Train South RAMP Scorecard includes the following information:
  - Vehicles and Fixed Components:
  - Systems, Testing & Communication Systems
  - Operations & Maintenance Readiness
  - Customer-Facing Projects
  - External Communications and Events
  - Dashboard



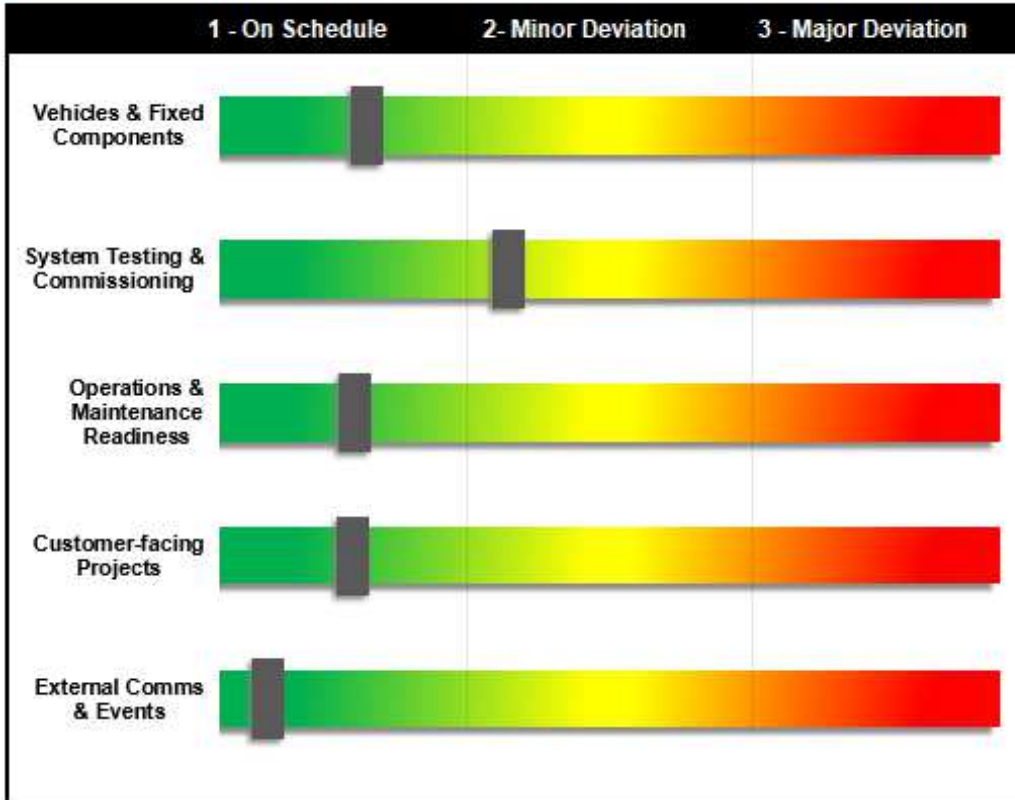
# Dashboard

## O-Train South Line Extension Rail Activation Management Program (RAMP) - Scorecard

### HEAT MAP

#### Status Reporting Legend

<b>1 - On Schedule</b>	Item is on schedule; and, There are no quality/effectiveness issues of concern.
<b>2 - Minor Deviation</b>	There is a minor deviation from the schedule with a recovery plan in place; and/or, There are minor quality/effectiveness concerns with a plan in place to address them.
<b>3 - Major Deviation</b>	There is a major deviation from the schedule, recovery will be a challenge; and/or; There are major quality/effectiveness concerns that will be difficult to address; and, Executive support or decision-making may be required.



### GO | NO-GO LIST

#### Status Reporting Legend

<b>Go</b>	Ready for Revenue Service
<b>No-Go</b>	Not Ready for Revenue Service

Theme	Criteria for Start of Service	Status	Comments
Safety	No outstanding safety defects	No-Go	
	No reliability issues that degrade safe operation	No-Go	
People	Staff & stakeholders: Fully mobilized	No-Go	
Guideway	Civil and track work: 100%	No-Go	
	Bus network and bus loops fully functional	No-Go	
Stations	No major impacts to customer experience	No-Go	
	Fire systems: 100%	No-Go	
	Lighting systems: 100%	No-Go	
Trains	Elevators & escalators: 100%	No-Go	
	13 trains	No-Go	
	Trains ready per Vehicle Minimum Operating Standard	No-Go	
Systems	No major impacts to customer experience	No-Go	
	Radio, tunnel ventilation system, and train control	No-Go	
	System performance during Trial Running is sufficiently robust/resilient to absorb service impacts	No-Go	
Maintenance	Contractual requirements fulfilled, TNext mobilized	No-Go	
OCT	Contract Management prepared for Revenue Service	No-Go	



# Vehicles and Fixed Components

Reporting Area	Status
<b>VEHICLES</b>	
Vehicles (Alstom LINT)	
Vehicles (Stadler FLIRT)	
<b>GUIDEWAY STRUCTURES</b>	
Limebank Road Bridge	
Rail Bridges (x9)	
Pedestrian Bridges (x2)	
MUP Bridges (x2) and Underpasses (x3)	
Airport Elevated Guideway	
Ellwood Grade Separation	
Dow's Lake Tunnel & Pump House	
<b>CIVIL &amp; GUIDEWAY WORKS</b>	
Segments 1 to 5	
<b>TRACKWORKS</b>	
Segments 1 to 5	
<b>OC SPACES (FIT OUT)</b>	
Bus Operator Buildings	
Bus Supervisor Offices	
Rail Operator Rooms	

- Completion Dates
  - Rideau River Pedestrian Bridge opening planned for late October / early November.

## Abbreviation

MUP	Multi-Use Pathway
TOCC	Transit Operations Control Centre
YCC	Yard Control Centre



# Vehicles and Fixed Components

Reporting Area	Status
<b>STATIONS</b>	
Bayview Station	Yellow
Corso Italia Station	Yellow
Dow's Lake Station	Red
Carleton Station	Yellow
Mooney's Bay Station	Yellow
Walkley Station	Yellow
Greenboro Station	Yellow
South Keys Station	Red
Uplands Station	Yellow
Airport Station	Yellow
Airport Integrated Entrance	Green
Leitrim Station	Yellow
Bowesville Station	Yellow
Limebank Station	Yellow
Bus loop - Leitrim	Yellow
Park and Ride – Leitrim	Yellow
Bus Operator Building – Leitrim	Yellow
Bus loop – Bowesville	Yellow
Park and Ride - Bowesville	Yellow
Bus Operator Building - Bowesville	Yellow
Access Roads - Limebank	Yellow
<b>MAINTENANCE FACILITY</b>	
Albion Yard Maintenance Facility	Yellow

- Stations
  - Energization required at Dow's Lake Station and South Keys Station – work starting week of September 25.
  - Building Code Services: Final Occupancy Permits required for all stations to allow for public access.
- Maintenance Facility
  - Building Code Services: Building Occupancy Permits required to occupy building on a full-time basis.
- Park & Ride Facilities / Bus Loops
  - Critical paving works at Leitrim, Bowesville, and Limebank planned for October.



# System Testing & Commissioning

Reporting Area	Status
<b>HEAD-END</b>	
Bayview - Head-End (MSF & TOCC) Fiber Connectivity	
Head-End Test Lab Readiness	
Head-End BCC Readiness	
Head-End TOCC Readiness	
<b>P25 RADIO</b>	
Tunnel Repeater Systems	
TOCC & BCC Radio Consoles	
Walkley, Limebank, South Key P25 Radio Systems	
<b>CELLULAR IN TUNNEL</b>	
Cellular Repeater Systems	

Abbreviation	
BCC	Back-up Control Centre
MSF	Maintenance Storage Facility
TOCC	Transit Operations Control Centre
YCC	Yard Control Centre



# System Testing & Commissioning

Reporting Area	Status
<b>SYSTEMS</b>	
Limebank - System Installation & Commissioning	
Bowesville - System Installation & Commissioning	
Leitrim - System Installation & Commissioning	
Airport - System Installation & Commissioning	
Uplands - System Installation & Commissioning	
Greenboro - System Installation & Commissioning	
South Keys - System Installation & Commissioning	
Corso Italia - System Installation & Commissioning	
Walkley - System Installation & Commissioning	
Dow's Lake - System Installation & Commissioning	
Dow's Lake Tunnel & Pumphouse - System Installation	
Bayview - System Installation & Commissioning	
Albion Yard - System Installation & Commissioning	
Carleton - System Installation & Commissioning	
Mooney's Bay - System Installation & Commissioning	

- Systems (cameras, telephones, passenger information displays, intrusion access control, fire alarms, and others).
  - Construction progress rate has delayed system installation. Installation at 80%.
  - Testing and commissioning in progress.
  - Delays in installation and commissioning of many devices in Albion Yard – high number of devices still to be installed at this location.



# System Testing & Commissioning

Reporting Area	Status
<b>TESTING &amp; COMMISSIONING</b>	
Project Wide System SATs	
Project Wide System SITs	
<b>TRAIN CONTROL</b>	
S&TCS - Static SATs	
S&TCS - Vehicle SAT	
S&TCS - External Interface SAT	
S&TCS - Dynamic SAT	
S&TCS - Final SAT	
S&TCS - Servers - Installation	
S&TCS - TOCC Workstations	
S&TCS - BCC Workstations	
S&TCS - YCC Workstations	
<b>TUNNEL VENTILATION</b>	
Dow's Lake Tunnel Ventilation - SAT	
Dow's Lake Tunnel Ventilation - SIT	

- Testing & Commissioning
  - The commencement of system integration tests depends on the successful completion of system acceptance tests.
- Signal & Train Control System (S&TCS)
  - Testing Progress has advanced, but at a slower rate than initially anticipated. Up to 5 trains in service achieved and working towards 9 in service.

Abbreviation	
BCC	Back-up Control Centre
SAT	System Acceptance Test
SIT	System Integration Test
TOCC	Transit Operations Control Centre
YCC	Yard Control Centre



# Operations & Maintenance Readiness

Reporting Area	Status
<b>REGULATORY APPROVALS</b>	Yellow
Building Code Services: Station Occupancy Permits	Red
Elevators: Technical Standards & Safety Authority (TSSA) Approvals	Yellow
OFS: Fire and Life Safety Certificates	Green
Transport Canada: Railway Operating Certificate	Green
Canadian Transportation Agency: Certificate of Fitness	Green
<b>MAINTENANCE READINESS</b>	Green
OCT Contract Management	Yellow
OCT Facilities Management	Green
Maintenance Management Performance Reporting System (MMPRS)	Red
Delivery of Specialized Tools and Equipment	Green
Maintenance Equipment Delivered	Green
Maintenance IT Systems	Green
Spare Parts on Hand	Green
Maintenance Personnel	Green

- Building Code Services
  - Delays in commissioning the fire and life safety systems is resulting in a delay to obtaining the occupancy permits at the stations.
- Elevators TSSA Approvals
  - Delays in communication system installation and commissioning has resulted in delays to elevator readiness for TSSA approvals.
- Maintenance Management Performance Reporting System is used for asset management and for calculating daily performance.

Abbreviation	
OCT	OC Transpo



# Operations & Maintenance Readiness

Reporting Area	Status
<b>OPERATING PLANS &amp; PROCEDURES</b>	
Operations and Maintenance (O&M) Manuals/Plans	
Standard and Emergency Operating Procedures	
TOCC Diversions	
<b>SAFETY &amp; SECURITY CERTIFICATION</b>	
Final Integrated Hazard Log	
Engineering Safety and Assurance Case (ESAC) Part 1 System ready for Trial Running	
Engineering Safety and Assurance Case (ESAC) Part 2 System Ready for Service	
Operator Safety Case Plan and Final Operator Safety Case	
Maintainer Safety Case	
Independent Safety Assessor (ISAs) - Assessment (TNEXT)	
Independent Safety Auditor (ISA) - Audit (City)	
Safety Management System (SMS)	
Security Management System (SeMS)	
Final Security Certificates	
<b>EMERGENCY PREPAREDNESS</b>	
Full Scale Exercise Completed	

Reporting Area	Status
<b>PRE-LAUNCH COORD &amp; LIVE TESTING</b>	
Technical Drills & Integrated Exercises	
Dress Rehearsal	
Tabletop Exercises (TTEs)	
<b>TRIAL RUNNING</b>	
Trial Running Test Plan & Evaluation Process	
<b>BUS SERVICE READINESS</b>	
Bus Loop Testing	
Bus Loop & Station Management Plans	
Final Bus Routes	
R2 & R4 - Rail Replacement Plans	
L2 & L4 - Full-Service Plan	

Abbreviation	
L2 & L4	Trillium Line, includes lines 2 and 4
R2 & R4	Rail replacement bus services
TOCC	Transit Operations Control Centre



# Operations & Maintenance Readiness

Reporting Area	Status
<b>TRAINING PROGRAM</b>	Yellow
Simulator Available	Green
Curriculum Developed & Training Materials Provided	Green
Diesel Rail Operator Instructor Training (in-class)	Green
Diesel Rail Operator Training (in-class)	Yellow
Diesel Rail Controller Training (in-class)	Green
On the Job Training (OJT)	Red
Bus Operator	Green
<b>STAFFING &amp; RECRUITMENT</b>	Yellow
Diesel Rail Operator (DRO)	Yellow
Diesel Rail Controller (DRC)	Yellow
Supervisors	Green
Superintendents	Green

- Diesel Rail Operator Training (in-class)
  - Ensuring operator availability for both commissioning and training shifts.
- Operations Training
  - Achieving full system functionality to enable final training of Instructors, Operators, and Controllers.

## Abbreviation

DRO	Diesel Rail Operator
DROI	Diesel Rail Operator Instructor
DRC	Diesel Rail Controller
OJT	On the Job Training



# Customer-Facing Projects

Reporting Area	Status
<b>CUSTOMER FACING IT SYSTEMS</b>	
Elevator availability	
CCTV	
ETEL/ITEL availability	
OCT-supplied Passenger Information Display (PID)	
PA/PIDs Messaging - Onboard Trains	
PA/PIDs Messaging - TransitNEXT supplied	
Fare Control	
<b>STATION SIGNAGE &amp; STATION FIT-OUT</b>	
Signage	
Ad panels	
Customer Service / Customer Assistance Direct Lines	
EV Chargers	
<b>ARTS PROGRAM</b>	
Limebank Station Art	
South Keys Station Art	
Corso Italia Station Art	
<b>BUS SERVICE AND MULTIMODAL INTEGRATION</b>	
MUP Connectivity	
Trailblazing Signage	

- Customer Facing IT Systems
  - Delays are occurring due to the progress rate in system installation and Testing and Commissioning.
  - CCTV & ETEL/ITELs are largely installed but being tested and connected to the headend.
- Customer Service / Customer Assistance Direct Lines
  - Construction rate at certain stations has led to a delay in the installation of the telecom cables.

Abbreviation	
ETEL	Emergency Telephone
ITEL	Passenger Assistance Information Telephones
MUP	Multi-Use Pathway
PID	Passenger Information Display
PA	Passenger Announcement



# External Communications & Events

Reporting Area	Status
<b>CUSTOMER READINESS CAMPAIGN</b>	Green
Opening Day events	Green
Customer Marketing and Readiness	Green
<b>STAGE 2 CUSTOMER INFORMATION</b>	Green
Station Customer Information Content	Green



# Handover Process

## Operations & Maintenance Readiness

- Diesel Rail Controller Training
- Diesel Rail Operator Training
- Emergency Responder Training
- Maintenance Training & Contractor Reporting Tools

## Station and Maintenance Facility Readiness

- Station Construction Completion & Commissioning
- TSSA – Elevator Approval
- Fire Safety Plans
- Building Code Services (Occupancy Permits)

**Trial  
Running**

## Trains & Systems

- Guideway & Track
- Trains
- Signals, Radio, Fare Collection & Communication Systems
- Testing & Commissioning

## Regulatory Approvals

- Railway Operating Certificate
- Certificate of Fitness
- Approval of various secondary submittals



# Handover Process

## Passenger Service

- Dress Rehearsals & Additional Test Running

## Substantial Completion

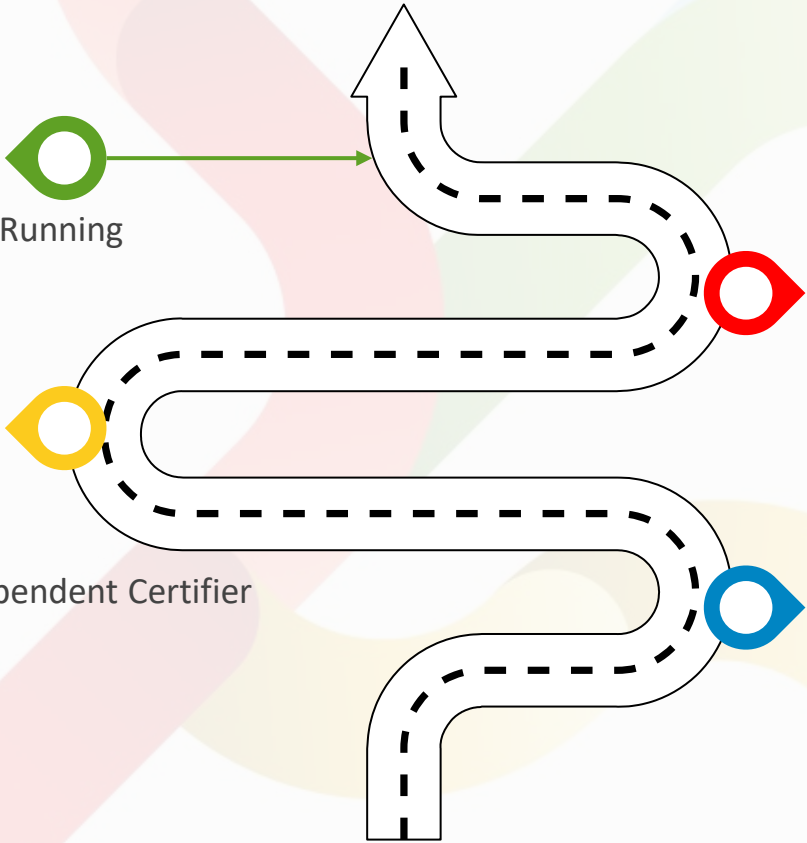
- Regulatory Approvals
- Safety & Security Certification
- Systems Integration Verifier & Independent Certifier
- Safety Auditor

## OC Transpo Readiness

- Configuration of OC Spaces
- OC Transpo Bus Loop Testing
- OC Transpo Bus and Transit Network Changes
- OC Transpo Communications Campaign

## Trial Running

- Operations & Maintenance Readiness
- Trains & Systems
- Station & Maintenance Facility Readiness
- Tunnel Readiness





# Sharing Information

- ☑ August 9 – Councillor Orientation Session
- ☑ August 15 – Stage 2 Quarterly Memo
- ☑ August 29 LRSC – Stage 2 Construction Update
- ☑ September 14 TC – Update on LRT
- ☑ September 29 LRSC
  - Deep dive on O-Train South
  - Update on the Public Inquiry and Action Plan
- ➔ **October 12 – Transit Commission**
  - Root Cause Analysis for the Bearing Issue
  - Report - LRT incidents related to freezing rain, lightning strikes and other issues
- ➔ **Fall 2023 – New Stage 2 webpage on [OCTranspo.com](https://octranspo.com)**



# Stay connected



For more progress videos, visit: [youtube.com/c/Octranspo1Ottawa](https://youtube.com/c/Octranspo1Ottawa)



Follow us on Instagram at: [@OC\\_Transpo](https://www.instagram.com/OC_Transpo)



Visit our website: [Ottawa.ca/Stage2](https://Ottawa.ca/Stage2)



Sign up for e-newsletters: [Ottawa.ca/Stage2Connect](https://Ottawa.ca/Stage2Connect)



Contact us: [Stage2@ottawa.ca](mailto:Stage2@ottawa.ca)





**Questions?**