



STAGE ETAPE

A decorative graphic consisting of three thick, diagonal lines meeting at a central point. The top-left line is blue, the top-right line is red, and the bottom line is green. Each line has a circular gradient overlay in its respective color.

SOUTH EXTENSION
PROLONGEMENT **SUD**

Lines 2 and 4 Construction Updates



Continue to work with TNEXT to close out all remaining work, including:

- Minor works including MUPs
- Final landscaping
- Locomotive Voice and Video Recorder
- Passenger Information Display Systems



City works:

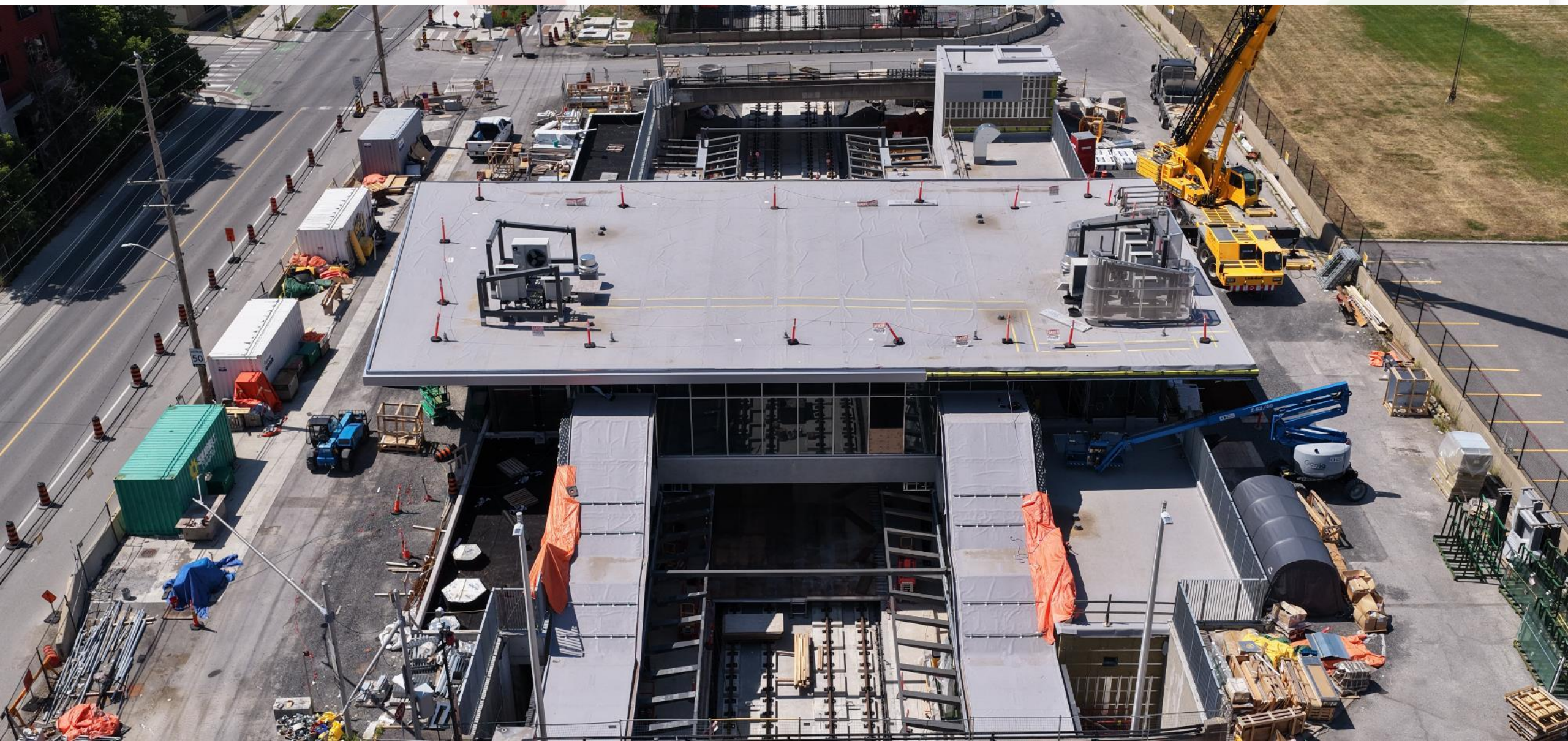
- Retrofit of rail switch component (rail "frog") by Beech Street and Brookfield Siding
- Bearing condition monitoring system installation completed. Testing and commissioning to follow.





WEST EXTENSION
PROLONGEMENT **OUEST**

Westboro Station



Kichi Zìbì Station



Kichi Zībī Mīkan



Sherbourne Station



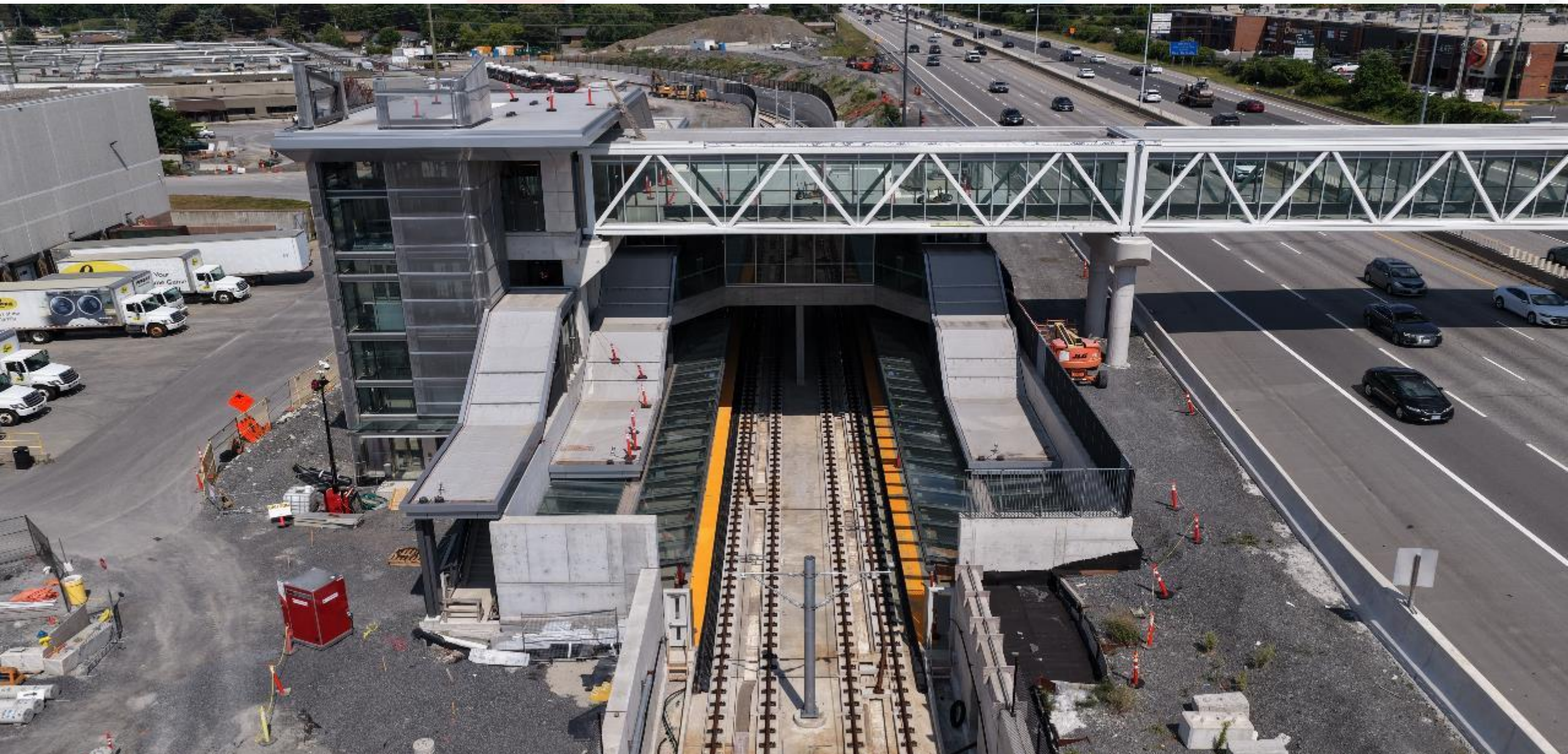
New Orchard Station



Lincoln Fields Station



Queensview Station



Pinecrest Station



Bayshore Station



Moodie Station



Iris Station



Algonquin Station



Guideway Progress



Revitalizing Richmond Road



Revitalizing Richmond Road (Cont'd)



West Activities

- 🎯 **Summer 2025:** Train movements occurred along a short section of track at Corkstown LMSF and on the mainline to Bayshore
- 🎯 **Summer 2025:** Installation of rail infrastructure complete
- 🎯 **Ongoing:** Installation of overhead catenary system ongoing from LMSF to Westboro and south to Algonquin Station
- 🎯 **Ongoing:** Cable pulling through the tunnel
- 🎯 **Ongoing:** Installation of Tunnel Ventilation Systems



Revitalizing Richmond Road

- **2025:** Utility work and roadwork on Richmond Road will continue
- Woodroffe Avenue closed and will be for approximately three months for deep sanitary sewer replacement
- **2026:** Construction activity will be focused on Byron Avenue and completing Richmond Road
- **2027:** Byron Linear Park landscaping



West Traffic and Mobility Impacts

Location	Timeline	Traffic & Mobility Impacts
Highway 417 and Pinecrest Interchange	Ongoing	<ul style="list-style-type: none">• Staging on 417 Mainline (2026)
Highway 417 and Richmond Interchange	Ongoing	<ul style="list-style-type: none">• Lane shifts and closures on Richmond bridge over Hwy 417 (upcoming)
Highway 417 and Holly Acres Interchange	Ongoing	<ul style="list-style-type: none">• Impacts to 417 SW on-ramp and lane closures on Holly Acres Road. Reduced lanes on Holly Acres off-ramp
Highway 417 and Moodie Interchange	Fall 2025	<ul style="list-style-type: none">• Impacts to 417 NW and NE on-ramp (upcoming)

West Traffic and Mobility Impacts (*Cont'd*)

Location	Timeline	Traffic & Mobility Impacts
Corkstown Road	Ongoing	Multiple lane closure to assist with construction and landscaping. Closures at Moodie & Corkstown for intersection construction.
Kichi Zībī Mīkan	Ongoing	Multiple long term lane closures to finish road modifications and realignment of the road.
Richmond Road (between New Orchard Avenue and McEwen Avenue)	Ongoing	Multiple closures for Revitalizing Richmond Road Project and construction of new Byron Linear Park.
Woodroffe Avenue (north of Richmond Road)	Ongoing	Full closure of Woodroffe north of Richmond Road to construct the new utilities, including a deep sanitary sewer replacement and reconstruction of the intersection with cycle lanes and new signals.
Carling Avenue	Ongoing	Lane closures to complete median and intersection work at Lincoln Fields Station.

O-Train West Estimated Timeline

Work Activity	2025				2026				2027
1. Moodie Light Maintenance Facility									
2. Parkway Tunnel Construction									
3. Completion of Track & Systems Installation									
4. Systemwide Commissioning									
5. Operations & Maintenance Training									
6. EWC Handover to City									
7. Trial Running									
8. Trial Operations									

A decorative graphic consisting of three thick, diagonal lines meeting at a central point. The top-left line is blue, the top-right line is red, and the bottom line is green. Each line has a circular gradient effect, with a lighter color in the center of the line.

EAST EXTENSION
PROLONGEMENT **EST**

Montréal Station



Jeanne d'Arc Station



Convent Glen Station



Place d'Orléans Station



Trim Station and Park and Ride



Upcoming East Activities

- 🎯 **Q3 2025:** Integration of new headend equipment.
- 🎯 **Q3 2025:** Complete Trim Park and Ride
- 🎯 **Q3 2025:** Complete train testing and operator training
- 🎯 **Q3 2025 :** Obtain Building Code Service occupancy permits
- 🎯 **Q3 2025:** Station Fire-life safety sign-offs
- 🎯 **Q3 2025:** Paving OR174; Trim - Champlain WB



East Traffic and Mobility Impacts

Location	Timeline	Traffic & Mobility Impacts
Highway 174	Ongoing	Lane and ramp closures as required. Work is expected to continue on the OR 174 before and after substantial completion to bring the Highway to its final state and alignment.
Montréal Road	Ongoing	Lane closures and off-peak under OR 174 overpass and ramp closures to complete remaining work for 2025
Jeanne d'Arc Blvd	Ongoing	Lane closures and off-peak full closures as part of rehabilitation and active transportation enhancements in early 2025

East Traffic and Mobility Impacts

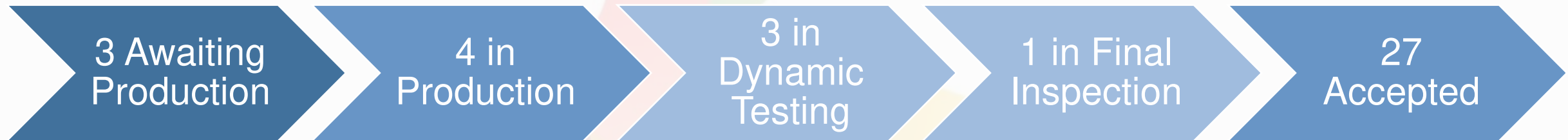
Location	Timeline	Traffic & Mobility Impacts
Orléans Blvd	Ongoing	All lanes are open and periodic lane closures are expected for sidewalk/station work.
Champlain Street	Ongoing	<p>All lanes are open and periodic lane closures are expected for sidewalk/station work.</p> <p>Lane closures and off-peak full closures for intersection works at Champlain and Place d'Orléans Drive in 2025.</p>

O-Train East Estimated Timeline

Work Activity	2025			
1. Systems Installation				
2. Systemwide Commissioning				
3. Operations & Maintenance Training				
4. EWC Handover to City				
5. Trial Running				
6. Trial Operations				

Remaining works including OR174 highway realignment to follow

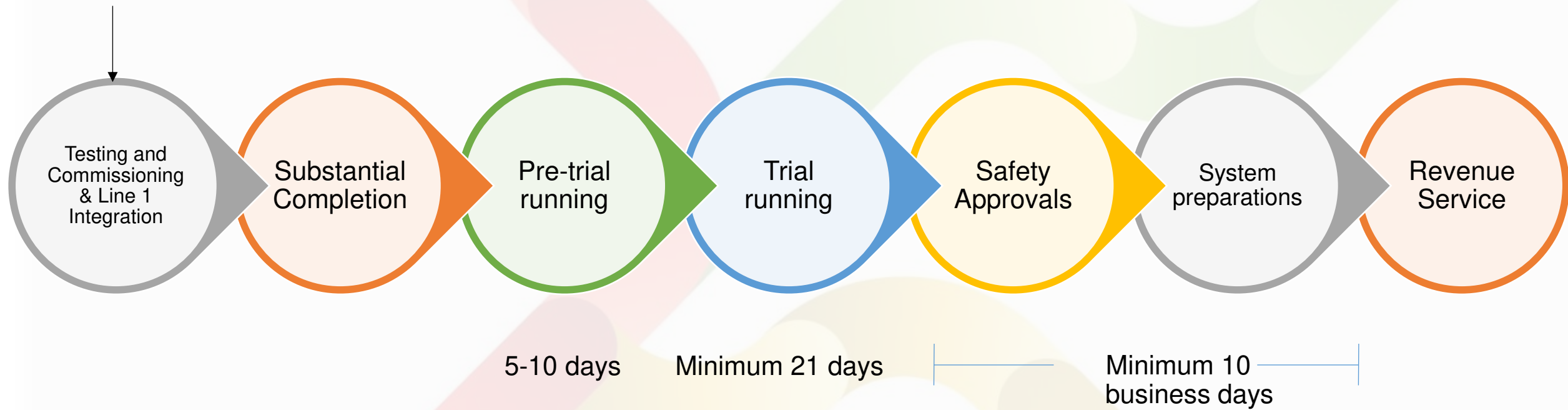
Alstom Citadis Production (Stage 2)



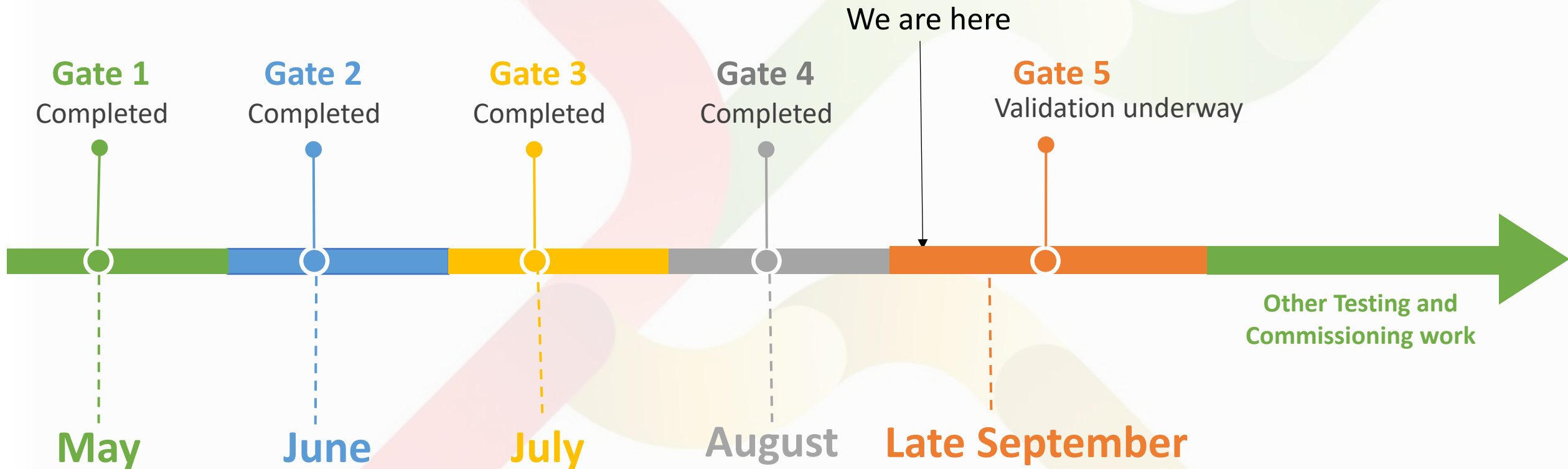
O-Train East Pathway to Passenger Service

O-Train East Pathway to Passenger Service

We are here



O-Train East Systems Migration



Line 1 East Extension Performance Testing

- Line 1 East Extension Performance Test is scheduled for September 13-14
- The objective is to demonstrate that the integrated system can achieve the peak service levels specified in the Project Agreement
- Multiple test scenarios to stress the system, including 23 double car trains running between Tunney's Pasture and Trim stations
- Temporary Speed Restrictions will be safely suspended during the testing to ensure travel times and headways can be achieved
- Due to the various test requirements and to ensure customer safety, Line 1 service will not operate. Customers will use R1

Questions?

